

Review article

Loneliness as a predictor of suicidal ideation and behaviour: a systematic review and meta-analysis of prospective studies

Heather McClelland^{a,*}, Jonathan J. Evans^b, Rebecca Nowland^c, Eamonn Ferguson^d,
Rory C. O'Connor^a

^a Suicidal Behaviour Research Laboratory, Institute of Health and Wellbeing, University of Glasgow

^b Institute of Health and Wellbeing, University of Glasgow

^c School of Nursing, University of Central Lancashire

^d School of Psychology, University of Nottingham



ARTICLE INFO

Keywords:

Loneliness

Suicide

Self-harm

Self-injury

Depression

Review

ABSTRACT

Background: Suicide and suicidal behaviour are global health concerns with complex aetiologies. Given the recent research and policy focus on loneliness, this systematic review aimed to determine the extent to which loneliness predicts suicidal ideation and/or behaviour (SIB) over time.

Methods: A keyword search of five major databases (CINHAL, Medline, PsychArticles, PsychInfo and Web of Knowledge) was conducted. Papers for inclusion were limited to those using a prospective longitudinal design, written in English and which measured loneliness at baseline and SIB at a later time-point.

Results: After duplicates were removed, 947 original potential papers were identified, with 22 studies meeting the review criteria. Meta-analysis revealed loneliness was a significant predictor of both suicidal ideation and behaviour and there was evidence that depression acted as a mediator. Furthermore, studies which consisted of predominantly female participants were more likely to report a significant relationship, as were studies where participants were aged 16–20 or >55 years at baseline.

Limitations: There was considerable variability in measures, samples and methodologies used across the studies. Middle-aged adults were under-represented, as were individuals from minority ethnic backgrounds. All studies were conducted in countries where self-reliance and independence (i.e. individualism) are the cultural norm.

Conclusions: Loneliness predicts later SIB in select populations. However, due to the heterogeneity of the studies further research is needed to draw more robust conclusions. Suicide death also needs to be included as an outcome measure. A focus on more collectivist countries is also required.

1. Introduction

Suicide is a global health concern with over 800,000 deaths by suicide worldwide every year (World Health Organization, 2017). In some countries one in nine young adults report making a suicide attempt (Wetherall et al., 2018). Progress in predicting suicidal behaviour has not improved markedly in the last 50 years (Franklin et al., 2017) and therefore identifying more specific risk factors for suicidal behaviour remains an urgent research priority.

There are many theories which offer explanations for suicidal behaviour. One such approach is the Integrated Motivational-Volitional Model of suicidal behaviour (IMV; O'Connor and Kirtley, 2011, 2018) which allows for the exploration of biological, psychological and social

factors contributing to self-injurious acts. Psychological factors could be considered more enmeshed when compared to biological or social factors. Relative to psychiatric illness, psychological factors are comparatively under-researched. For the purposes of this review we focused on the psychological factor of loneliness in relation to self-injurious behaviour.

Loneliness is defined as 'when a person's network of social relations is deficient in some important way, either quantitatively or qualitatively' (Perlman and Peplau, 1981, p. 31). The distinction between social isolation and loneliness is important to highlight. Social isolation is outwardly visible to an onlooker; inferred by the lack of social proximity and engagement with others, though the individual themselves may not feel alone. By contrast, loneliness is a subjective psychological

Abbreviations: SIB, Suicidal ideation and behaviour

* Corresponding author.

E-mail address: heather.mcclelland@glasgow.ac.uk (H. McClelland).

<https://doi.org/10.1016/j.jad.2020.05.004>

Received 25 October 2019; Received in revised form 30 April 2020; Accepted 5 May 2020

Available online 22 May 2020

0165-0327/ © 2020 Elsevier B.V. All rights reserved.

state identified through introspection and thereby incorporates those who may feel lonely within a crowd (Bondevik and Skogstad, 1998).

Loneliness has gained increasing attention from national governments and public health organisations (UK Government, 2018; Loneliness Taskforce, 2018), with the recognition that worldwide, approximately 11–17% of the general population experience loneliness at some time in their lives (Beutel et al., 2017; British Red Cross, 2016; Victor and Yang, 2012). Loneliness has consistently been found to be associated with both suicidal ideation and behaviour in research studies (Hedley et al., 2018; Stickley and Koyanagi, 2016; Stravynski and Boyer, 2001; Teo et al., 2018) as well as in more general systematic reviews (Calati et al., 2019; Mushtaq et al., 2014). Furthermore, some studies suggest that loneliness is more closely related to suicide risk than perceived social support (Chang et al., 2017).

Cross-sectional research indicates that the frequency of loneliness is age-dependent (Batigun, 2005); being most prevalent in those <30 and >80 years of age (Yang and Victor, 2011); peaking in adolescence and old age (Qualter et al., 2015). These age ranges coincide with increased prevalence of suicidal behaviour (though not suicide death) in younger and older adults compared to other age groups (Nock and Prinstein, 2005; Turecki and Brent, 2016). This therefore suggests that demographic factors may influence the detection of loneliness predicting later suicidal ideation and/ or behaviour (SIB). However, the nature of the relationship between gender, loneliness and SIB is less clear. Although men are three times more likely to die by suicide than women (Office for National Statistics, 2019), women are more likely to experience suicidal ideation or engage in self-harm (O'Connor et al., 2018). In comparison, gender differences in loneliness have been less consistent. Some studies have found loneliness to be more prevalent in men while others have reported the reverse (De Jong Gierveld and Van Tilburg, 2010; Stokes and Levin, 1986), with a recent meta-analysis finding no gender differences in loneliness overall (Maes et al., 2019). Collectively, the evidence points to no gender difference in the association between loneliness and SIB cross-sectionally (Beutel et al., 2017). These findings therefore suggest that prospectively, age may be the only demographic factor to moderate the loneliness–SIB relationship. However, given that the concept of loneliness is likely to be culturally influenced, we also aimed to investigate whether the latter relationship is affected by geographical location.

To date, prospective studies investigating the relationship between loneliness and SIB are scarce; reviews have typically focused on loneliness as a risk factor for mental health difficulties (e.g. affective disorder), specifically excluding SIB as outcome measures (Holt-Lunstad et al., 2015). These prospective reviews have found loneliness to be a stronger predictor of later depression, when compared to anxiety or substance abuse as outcome variables (Beutel et al., 2017; Van Orden et al., 2010; Vanhalst et al., 2012; Wang et al., 2018). Furthermore, as loneliness has been found to have a reciprocal relationship with depression (Cacioppo et al., 2006; Qualter, 2010), and depression is associated with SIB (Hawton et al., 2013), it could be argued that depression may mediate a prospective loneliness–SIB relationship. However, to date no review has systematically explored the role of depression in the loneliness–SIB relationship over time, and therefore we investigated its mediating role in the present review.

To robustly explore whether loneliness is a prospective risk factor of SIB, a broad definition of suicidal behaviour was used to include self-harm, with the latter defined by the National Institute for Health and Care Excellence Guidelines (NICE, 2011) as “self-injury or self-poisoning irrespective of the apparent purpose of the act”. As a result, we included any studies of non-suicidal self-injury (NSSI), suicide attempts and suicide. In addition to acts of suicidal behaviour, given that approximately 12% of individuals who experience suicidal ideation or NSSI will attempt suicide within 5 years (Mars et al., 2019), we also investigated the relationship between loneliness and suicidal ideation or thoughts of self-harm.

1.1. Current aims

This review had the following three aims:

- i) to explore whether loneliness was a significant predictor of later SIB;
- ii) to identify if the loneliness–SIB relationship varied as a function of socio-demographics (specifically age, gender) and/ or geographic location;
- iii) to determine whether the loneliness–SIB relationship is mediated by depression.

2. Methods

2.1. Research Strategy

Five major psychological and medical databases (CINHAL, MedLine, PsychArticles, PsychInfo and Web of Knowledge) were searched up to 18th of December 2019 using the following search terms; (i) *lonel** OR “perceived social isolation” OR “perceived social exclusion” AND (ii) *suicid** OR “self-injurious” or “self-injury” OR “self injurious” OR “self injury” OR “self-harm” OR “self harm”. Data collection had finished before being registered with Prospero and therefore could not be listed on the website. PRISMA Guidelines (Moher et al., 2015) were followed (see Figure 1) where titles and abstracts were screened by the first author and an inter-rater check of 95% accuracy of 40 papers was conducted by a researcher external to the research team to ensure appropriate selection/exclusion of studies.

2.2. Inclusion and exclusion criteria

The inclusion criteria required studies to be (i) an empirical paper, (ii) written in English, (iii) reporting a prospective design (i.e. where loneliness was measured as a predictor of later SIB at a future time point) and (iv) loneliness and SIB assessments were both measured directly. Studies reporting suicidal ideation and all forms of suicidal behaviours (including suicide death, non-suicidal self-harm and suicide attempt) were included. Papers were excluded if i) they were a review paper, ii) they explored assisted suicide, or iii) loneliness was inferred by using an indirect measure (e.g. living status). Any uncertainty regarding the inclusion or exclusion criteria was discussed between the study authors until agreement was reached.

2.3. Data Extraction

Study sample demographics, key measures, findings, analyses, confounding variables and author interpretations were extracted by the first author and collated on a data extraction sheet.

43% (n=9) of included papers were checked by an external researcher (a psychology graduate) for inter-rater reliability with 100% concordance after discussion.

2.4. Quality assessment

A quality assessment tool (see table 1) was designed specifically for this review based on the Quality Assessment Tool for Systematic Observational studies (QATSO; Wong et al., 2008). Quality assessments were based on the aims of this review and therefore any extensive analysis of measures used for other variables was not considered when evaluating each study against the quality assessment criteria. Quality assessments were completed by the first author and 20% of the papers were checked by another researcher external to the team for inter-rater reliability. Disagreements between the researchers were resolved via discussion with 100% post-discussion concordance. Quality assessment scores were calculated with higher totals reflecting higher quality studies (max score = 9).

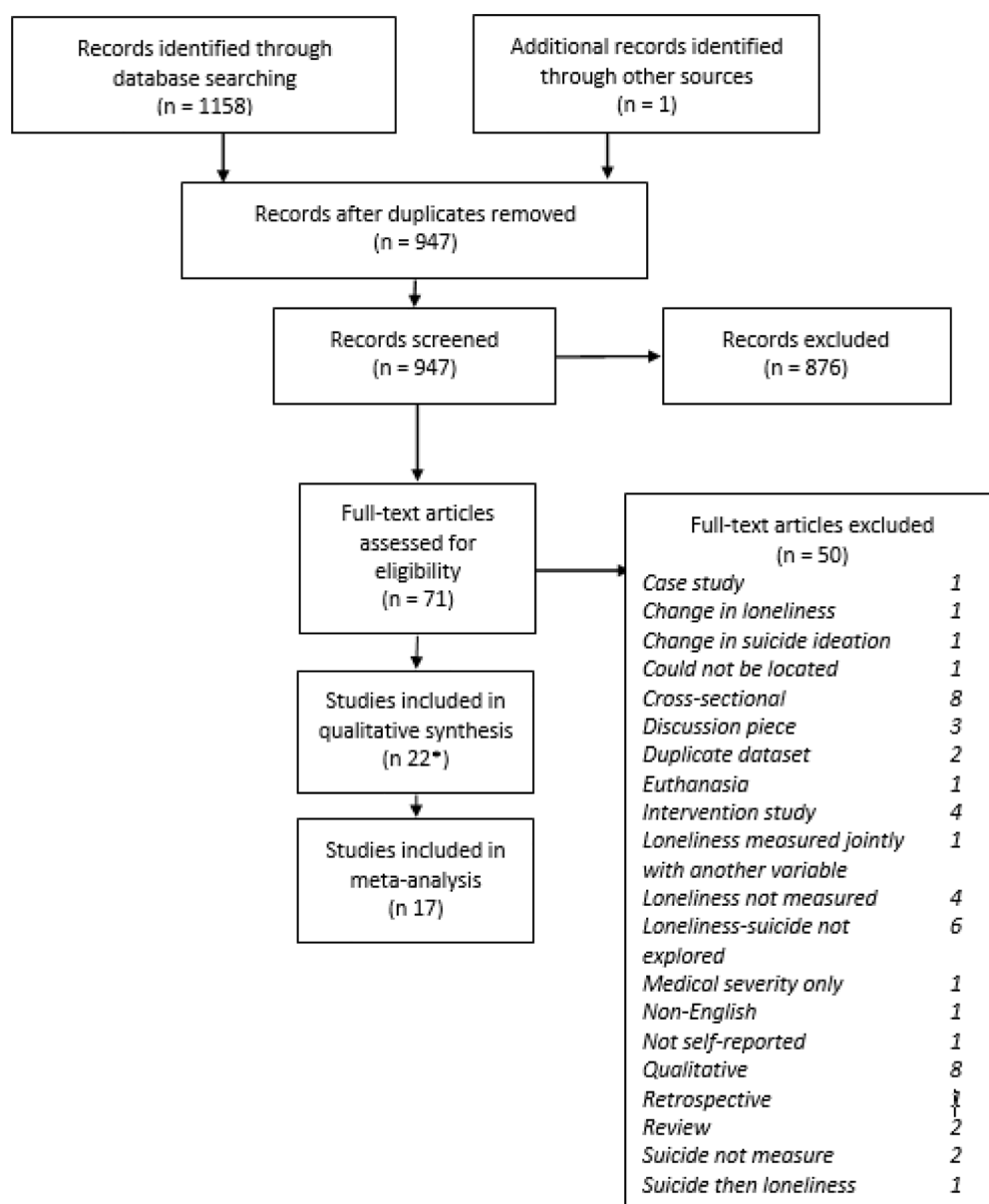


Fig. 1. Procedure for identifying applicable studies (screening and determining the eligibility for the current review)

Panel 1: Search Strategy. The databases searched in this review were Web of knowledge, Medline, CINAHL, PsychINFO and PsychArticles with EbscoHost being used to search the last 4 databases mentioned. The search terms were (1(i) lonel* OR "perceived social isolation" OR "perceived social exclusion", AND (ii) suicid* OR "self-injurious" OR "self injurious" OR "self-harm" OR "self harm". Terms were truncated to allow for various terminologies used within the papers. These terms were searched for in all articles of Web of Knowledge and in the abstracts and full articles of academic journals and journals of the remaining 4 databases. This yielded 2484 results which reduced to 1158 when limited to English-only text in all databases. For Medline, PsychInfo, PsychArticles and CINAHL only, the search results were further limited by removing articles classified as a literature review, systematic review, brain imaging, mathematical model, meta-analysis, books and/or scientific simulation. This resulted in a total of 947 studies which were screened visually by the first author, followed by an inter-rater check of 20% of the papers by a research colleague with 100% concordance

2.5. Statistical analyses

Comprehensive Meta-Analysis (version 3, Borenstein et al., 2013) was used to conduct all meta-analyses, weighted by sample size. Moderation analysis was used to explore whether findings varied as a function of gender, age and quality assessment score. Due to the small number of studies, it was not possible to examine moderating effects for studies of suicidal ideation and behaviour outcomes separately. In each moderation analysis, averages were calculated for studies where multiple effect sizes were reported (e.g. across multiple timepoints or suicidal ideation and behaviour). In all cases where gender ratio was reported, this was done so using a binary scale. Subgroup analyses of gender were dichotomised based on gender prevalence within the sample (i.e., sample demographics were $\geq 50\%$ female vs $< 50\%$ female) as well as investigated continuously (i.e., % female in the sample). Moderation analysis of age was based on all studies where the mean age of the participant sample was reported and this was treated as a continuous variable. Analysis of depression as a mediator between loneliness and SIB was conducted using calculated r-values.

3. Results

As illustrated in Fig. 1, a total of 947 original studies were initially identified by database searches for potential inclusion in the systematic review, of which 20 met the review criteria. One further article was identified through a search of references of included studies, resulting in a total of 21 papers selected for the review. This included one manuscript that published two studies within the same paper (Kleiman et al., 2017), one study that reported only some of their outcome measures (Bennardi et al., 2019), three papers that measured loneliness at two timepoints (Gallagher et al., 2014; Hom et al., 2019; Schinka et al., 2013) and a final paper that, despite being an editorial (Pietrzak et al., 2017), it was agreed between the review authors that this study should be included as it was consistent with the inclusion and exclusion criteria of this review. See Appendix A for additional information regarding these studies and how they are referred to within this review. In all, 22 studies from 21 papers are discussed in this systematic review, with 28 results regarding loneliness as a predictor of later SIB. Summaries of each study's sample demographics, measures

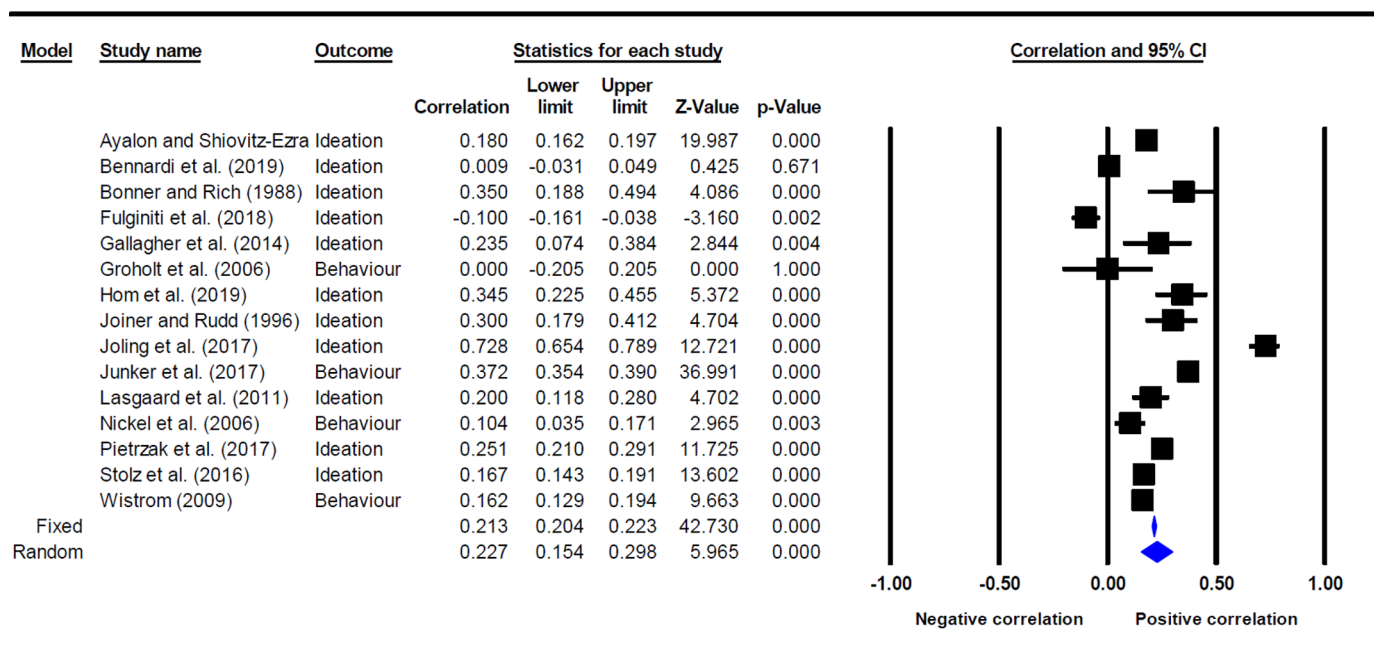


Fig. 2. Forest plot of overall effect sizes from whole participant group

used, findings and quality assessment score are displayed in Table 2.

Where relevant data were not available in the papers, authors of the studies included in this review were contacted for additional information for inclusion in the meta-analysis. In total, 17 studies (23 effect sizes) were included in the meta-analysis (see Appendix B for details of excluded studies). Effect sizes used were either reported by study authors or calculated by the authors of this review from information available in the paper. In order to effectively synthesise the findings from the papers included in this review, factors that influence the loneliness–SIB relationship were also critically examined in tandem with the aims outlined in the introduction. To investigate the extent to which loneliness predicts SIB, the results presented here are grouped by outcome variable (suicidal ideation vs. all suicidal behaviour including suicide death, suicide attempt and non-suicidal self-harm). The results of this review are separated by approach, with narrative summaries discussed in section 3.1 and meta-analytical findings discussed in 3.2.

3.1. Narrative Summary of Study Findings

This section discusses all 22 studies included in the review. The results are presented as follows:

- i Identification of a loneliness–SIB relationship
- ii Methodological quality
- iii Evidence of a loneliness–SIB relationship in adjusted and unadjusted univariate analyses;
- iv Moderating effects of socio-demographic characteristics (age, gender, ethnicity) or geographical location on to the loneliness–SIB relationship;
- v The role of depression as a mediator of the loneliness–SIB relationship;
- vi Other confounding variables (e.g. psychometric measures used, follow-up duration, study sample size, recruiting sites) affecting loneliness–SIB relationship

3.1.1. Identification of a loneliness–SIB relationship

17 studies (20 analyses) explored suicidal ideation as an outcome, while seven studies (eight results) measured suicidal behaviour, this includes two studies which measured both suicidal ideation and

behaviour at two different timepoints (see Table 2). Of the 20 analyses that explored suicidal ideation 12 results indicated that loneliness was a significant predictor variable. Additionally, Stein et al. (2017) reported an indirect pathway from post-traumatic stress syndrome (PTSS) to loneliness at the same timepoint predicting later suicidal ideation. Gallagher et al. (2014; T2–T3) reported a significant association while Gallagher et al. (2014; T1–T3) did not.

Three (Junker et al., 2017; Nickel, 2006; Wichstrøm, 2009) of the seven studies (8 analyses) which explored any form of suicidal behaviour found loneliness to be a significant predictor. Studies which reported a significant association were all those which explored self-harm as the outcome. Of the six studies to measure suicide attempt, the only study to report a significant association with loneliness and suicide attempt was Wichstrøm (2009), however for this study suicide attempt and self-harm was measured as a single outcome variable.

3.1.2. Methodological quality

Individual quality assessment scores are reported in Table 2. The maximum score obtainable was nine. The mean score across the 22 studies was 5.18 ± 1.8 (range: 2 to 8). The lowest scoring domain was study design, where under a third of studies reported using representative samples.

3.1.3. Unadjusted Univariate Analysis

Across the 22 studies in this review, 26 unadjusted and nine adjusted effect sizes were reported, including seven studies that reported both adjusted and unadjusted results. Of the 26 unadjusted effect sizes ($n=20$ studies) identified within the systematic review, half reached the generally accepted level of statistical significance ($p<0.05$). In those studies where a significant loneliness–SIB association was found, they tended to be European-based studies, to have larger than average sample size, and to include participants that were predominantly female. Six studies (seven analyses) explored the unadjusted relationship between loneliness and suicidal behaviour with only two of these studies finding a significant loneliness–suicidal behaviour association; these studies were also the only two studies to include self-harm without suicidal intent as an outcome variable (Nickel et al. 2006; Wichstrøm, 2009). However, it should be noted that Wichstrøm's (2009) measure of suicidal behaviour included both self-

Table 1
Quality Assessment Criteria

Score	Design	Confounder variables	Attrition	Validity of predictor measure	Validity of outcome measure	Included in meta-analysis
0	Opportunity sampling	No attempt to control confounding variables during recruitment or analysis	Significant attrition/ loss of target population; Attrition not reported	Single-item assessment with no valid or reliable backing	Unclear assessment of suicidal ideation or behaviour; Measure is invalid or unreliable; Mixed assessment of SIB	No
1	Representative samples	Some attempt to control for confounding variables (e.g. demographics)	Good participant retention $\geq 60\%$	1 or 2 items taken from a standardised measure of a wider psychological assessment	1 or 2 items taken from a standardised measure of a wider psychological assessment to assess either suicidal ideation or suicidal behaviour;	Yes
2		Accounts for additional confounding variables e.g. suicide history, depression, other psychological variables		Full measure or subscale targeted to explore loneliness	Full measure or subscale targeted to assess suicidal ideation or suicidal behaviour; Hospital records, death certificate or coroner's report	

harm and suicide attempt. By comparison, 11 of the 19 studies identified a significant unadjusted effect size between loneliness and suicidal ideation. This included all European studies which measured suicidal ideation, further trends were not identified.

3.1.4. Adjusted Univariate Analyses

Nine studies reported adjusted effect sizes, descriptions of the controlled variables are summarised in [Appendix C](#). Four of these studies reported that the loneliness-SIB relationship remained significant after controlling for various demographic factors ([Ayalon and Shiovitz-Ezra, 2011](#); [Bennardi et al., 2019](#); [Junker et al., 2017](#); [Stein et al., 2017](#)). There was no discernible pattern of associations between control variables and the loneliness SIB relationship.

3.1.5. Age

Across all 22 studies there was evidence that the association between loneliness and SIB was age dependent. Participants ranged in age (at baseline) from 9 to 102 years old across the included studies (see [Table 2](#)). Studies exploring either younger (16 to 20 years, $n=7$; [Groholt et al., 2006](#); [Hom et al., 2009](#); [Joiner and Rudd, 1996](#); [Junker et al., 2017](#); [Lasgaard et al., 2011](#); [McGraw et al., 2008](#); [Wichstrøm, 2009](#)) or older adults (≥ 58 years, $n=5$; [Ayalon and Shiovitz-Ezra, 2011](#); [Bonner and Rich, 1988](#); [Joling et al., 2018](#); [Pietrzak et al., 2017](#); [Stolz et al., 2016](#)) were more likely to identify loneliness as a significant predictor of SIB than studies with an average participant age either less than 14 years ([Gallagher et al., 2014](#) T1-T2; [Salzinger et al., 2007](#); [Schinka et al., 2013](#) T1-T3 and T2-T3) or between 23 to 54 years old on average ($n=3$; [Kleiman et al., 2017](#), Study 2; [Stein et al., 2017](#); [Trakhtenbrot et al., 2016](#)). Only two of the studies in this review directly explored age differences as a study aim and both used suicidal ideation as the outcome variable. [Ayalon and Shiovitz-Ezra \(2011\)](#) found that loneliness did not predict later suicidal ideation in those over 75 years of age but did in those aged 55–65 and 66–75 years. [Bennardi et al. \(2019\)](#) found that loneliness only predicted suicidal ideation in the participant group aged >60 years old in comparison to those aged under 60 years of age.

3.1.6. Gender

The collective distribution of men and women in the selected studies was slightly higher than that of the world population ([The World Bank, 2019](#)); mean (% female) $57.6 \pm \text{sd. } 28.8$. Only two studies focused on a single gender ([Stein et al., 2017](#), male-only; [Nickel et al., 2006](#) female-only).

Ten ([Ayalon and Shiovitz-Ezra, 2011](#); [Bonner and Rich, 1988](#); [Gallagher et al., 2014](#) T1-T3; [Hom et al., 2019](#); [Joling et al., 2018](#); [Lasgaard et al., 2011](#); [McGraw, 2008](#); [Nickel et al., 2006](#); [Stolz et al., 2016](#); [Wichstrøm, 2009](#)) of the 15 studies (20 analyses) that recruited predominantly female participants ($>50\%$ female participants) found loneliness to be a significant predictor of later SIB compared to three of the seven studies (eight analyses) that contained predominantly male participants.

3.1.7. Ethnicity

Nine studies reported the ethnicity of the study sample; eight studies included primarily white participants ([Fulginiti et al., 2018](#); [Gallagher et al., 2014](#); [Hom et al., 2019](#); [Joiner and Rudd, 1996](#); [Kleiman et al., 2017](#) Study 1; [Kleiman et al., 2017](#), Study 2; [Pietrzak et al., 2017](#); [Schinka et al., 2013](#)) while [Salzinger \(2007\)](#) recruited predominantly Hispanic participants (54%). Due to the variability of outcome measures and other participant demographics, no inferences could be made regarding the role of ethnicity in relation to the relationship between loneliness and SIB.

3.1.8. Geography

All studies were conducted in high income, Western countries, most commonly either in the USA ($n=9$; [Bonner and Rich, 1988](#);

Table 2
Summary of studies included in review including sample demographics and characteristics, study methods, measures used and results

Study/Country/Quality Assessment (QA) score(Max 9)In meta-analysis (Y/N)	Sample demographics at baseline (n, % female, age)	Type of sample	Follow-up duration (average)	Measures Loneliness	Suicide	Depression	Results
Ayalon and Shiovitz-Ezra (2011) Europe QA score = 6 Meta-analysis: Yes	Group 1: aged 50-65 years (n = 6,294) Group 2: aged 66-75 years (n = 2,891) Group 3: aged >75 years (n = 1,503) (54.4% female)	Community sample Ethnicity: NA	2-3 years	CES-D; ideation, 1 item (Radloff, 1977)	Ideation: Euro-D; 1 item (Prince et al., 1999) Behaviour: None	Euro-D (Prince et al., 1999)	Unadjusted: Loneliness was a significant predictor of passive death wishes in all three age groups (p < 0.001) Adjusted: Loneliness was a significant predictor of passive death wishes in Groups 1 and 2 only (p < 0.001). Loneliness was no longer a significant predictor of later passive death wishes in Group 3 once demographics (gender, education and geographic region) were controlled (p < 0.001). Unadjusted: Not available Adjusted: Suicidal ideation remained significantly predictive of suicidal ideation at follow-up in Group 2 only. (p = 0.009) Unadjusted: Loneliness significantly predicted suicidal ideation at follow-up (p < 0.05) Adjusted: None
Bennardi et al. (2019) Spain QA score = 8 Meta-analysis: yes	Group 1: n = 1,206 (53.9%; 18-59 years) Group 2: (n = 1,186) (54.5% female, age: 60 + years) (54.3% female; age: NA)	General population Ethnicity: NA	3.5 (± 0.18) years	UCLA (Russell, Peplau and Cutrona, 1980; Spanish translation)	Ideation: WHO CIDI- suicide module (Kessler and Üstün, 2004) Behaviour: None ^{††}	WHO CIDI - WMH survey version (Kessler and Üstün, 2004)	Unadjusted: Not available Adjusted: Suicidal ideation remained significantly predictive of suicidal ideation at follow-up in Group 2 only. (p = 0.009) Unadjusted: Loneliness significantly predicted suicidal ideation at follow-up (p < 0.05) Adjusted: None
Bonner & Rich (1988) USA QA: 4 Meta-analysis: Yes	N = 995 (59.9% Female; age: 11-18 years)	University students Ethnicity: NA	6 weeks	UCLA (Russell et al., 1978)	Ideation: SSI (Beck, Kovacs & Weissman, 1979) Behaviour: None	Self-Rating Depression Scale (Zung, 1963)	Unadjusted: Loneliness significantly predicted suicidal ideation at follow-up (p < 0.05) Adjusted: None
Fulginiti et al. (2018) USA QA: 7 Meta-analysis: Yes	N = 144 (72% female, Age: 13.52 ± 0.74)	General population Ethnicity: 3% White, 27.6% Hispanic, 19.5% Black	1.5 years	LSAQ (Asher et al. 1984)	Ideation: CIDI (1 item) Behaviour: None	CDI (Kovacs and Preiss, 1992)	Unadjusted: Loneliness did not significantly predict suicidal ideation at follow-up Adjusted: None
Gallagher et al. (2014; T1-T3) USA QA: 8 Meta-analysis: Yes	N = 144 (72% female, Age: 13.52 ± 0.74)	Psychiatric inpatients either at risk to themselves or others 75% White 4% Latino 3% African American	9 months	LSAQ (Asher et al. 1984)	Ideation: SIQ (Reynolds, 1985) Behaviour: None	DISC-IV (Shaffer et al. 2000)	Unadjusted: Loneliness significantly predicted suicidal ideation 9 months later (p ≤ 0.05) Adjusted: None
Gallagher et al. (2014; T2-T3) USA QA: 8 Meta-analysis: Yes	N = 144 (72% female, Age: 13.52 ± 0.74)	Psychiatric inpatients either at risk to themselves or others 75% White 4% Latino 3% African American	18 months	LSAQ (Asher et al. 1984)	Ideation: SIQ (Reynolds, 1985) Behaviour: None	DISC-IV (Shaffer et al. 2000)	Unadjusted: Loneliness did not predict suicidal ideation 18 months later. Adjusted: None
Groholt et al. (2006) Norway QA: 4 Meta-analysis: No	N = 92 (90% female, Age: 16.9 ± 1.8)	Inpatients admitted for suicide attempt Ethnicity: NA	9 years	UCLA- 5 (Russell et al., 1980)	Ideation: None Behaviour: self-report suicide attempt	BDI (Beck et al., 1988)	Unadjusted: loneliness did not significantly predict suicide attempt at follow-up. Adjusted: None
Hom et al (2019; T1-T3) USA QA: 6 Meta-analysis: Yes	N = 226 (89% female; 19.42 years)	University students 74% White, 6.6% Black, 13.7% Latino 3.5% Asian	1 month	UCLA (Russell, Peplau and Cutrona, 1980)	Ideation: DSI-suicide subscale (Joiner et al. 2002) Behaviour: None	None	Unadjusted: Loneliness significantly predicted suicidal ideation and follow-up (p < 0.01) Adjusted: None

(continued on next page)

Table 2 (continued)

Study/Country/Quality Assessment (QA) score(Max 9)/In meta-analysis (Y/N)	Sample demographics at baseline (n, % female, age)	Type of sample	Follow-up duration (average)	Measures Loneliness	Suicide	Depression	Results
Hom et al. (2019; T2-T3) USA QA: 6 Meta-analysis: Yes Joiner and Rudd (1996) USA QA score= 6 Meta-analysis: Yes	N = 226 (89% female; 19.42 years) N = 234 (43.1% female, 19.9 years)	University students 74% White, 6.6% Black, 13.7% Latino 3.5% Asian University students Ethnicity: 62% Caucasian 17% Hispanic, 21% other	10 weeks	UCLA (Russell, Peplau and Cutrona, 1980) UCLA (Russell et al., 1978)	Ideation: DSI-suicide subscale Behaviour: None Ideation: DSI Suicidality Subscale (Metalsky, 1991) Behaviour: None	BDI (Beck et al., 1988)	Unadjusted: Loneliness significantly predicted suicidal ideation and follow-up (p < 0.01) Adjusted: None Unadjusted: Loneliness was a significant predictor of suicidal ideation (r = 0.3, p < 0.01) Adjusted: Loneliness was no longer a significant predictor of suicidal ideation once depression and hopelessness were controlled for. Unadjusted: Those who reported suicidal ideation (Group 1) reported the highest loneliness scores at follow-up, followed by Group 2 then 3 (p < 0.01) Adjusted: None
Joiner and O'Dwyer (2018) Netherlands QA score= 5 Meta-analysis: Yes	Group 1: 9 adults with depression and suicidal thoughts Group 2: 67 adults with depression and no suicidal thoughts Group 3: 116 with no depression or suicidal thoughts (70.3% female, 69.5 ± 10.4 years) N = 8, 965 no history of hospitalised self-harm (49.7% Female; 16 ± 1.08 years at follow-up)	Live-in carers (adult community sample) Ethnicity NA	2 years	De Jong Gierveld loneliness scale (de Jong-Gierveld and Kamphuis, 1985)	Ideation: MINI, 1 item (Sheehan et al., 1998) Behaviour: None	CES-D (Radloff, 1977)	Unadjusted: Those who reported suicidal ideation (Group 1) reported the highest loneliness scores at follow-up, followed by Group 2 then 3 (p < 0.01) Adjusted: None
Junker, Bjørngaard, and Bjerkset (2017) Norway QA score= 5 Meta-analysis: No	N = 8, 965 no history of hospitalised self-harm (49.7% Female; 16 ± 1.08 years at follow-up)	Adolescent school sample Ethnicity NA	11.9 years	1 item from Young-HUNT 1	Ideation: None Behaviour: Hospital records	SCL-5 (Strand et al., 2003)	Unadjusted: None Adjusted: Controlling for baseline demographics, those who reported a higher level of loneliness at baseline were more likely to attend hospital for self-harm than those who reported a lower level of loneliness. Unadjusted: Baseline loneliness did not predict suicidal ideation at follow-up. Adjusted: Controlling for baseline suicide ideation, loneliness did not predict suicide ideation at follow-up.
Kleiman et al., 2017, Study 1) Worldwide QA score= 2 Meta-analysis: No	N = 54 Attempted suicide within the past year (79.6% female, 23.24 ± 5.26 years)	Adult community sample Ethnicity: 81% North American, 19% European	21.3 ± 11.7 days	EMA one-word affect label	Ideation: EMA one- word affect label, 3 items Behaviour: None	None	Unadjusted: Baseline loneliness did not predict suicidal ideation at follow-up. Adjusted: Controlling for baseline suicide ideation, loneliness did not predict suicide ideation at follow-up.
Kleiman et al., 2017, Study 2) USA QA score= 2 Meta-analysis: No	N = 36 Severe suicide ideation or recent suicide attempt. (44.1% female, 47.74 ± 13.06 years)	Adult inpatient sample Ethnicity: 82% European decent, 5.9% Hispanic	10.32 ± 6.45 days	One-word EMA affect label	Ideation: EMA one- word affect label, 3 items Behaviour: None	None	Unadjusted: Baseline loneliness did not predict suicidal ideation at follow-up. Adjusted: Controlling for baseline suicide ideation, loneliness did not account for any variability in suicide ideation at follow-up.
Lasgaard et al. (2011) Denmark QA score= 7 Meta-analysis: Yes	N = 541* (60% female; 17.11 ± 1.12 years)	Adolescent High School sample Ethnicity NA	1 year	UCLA (Russell, 1996)	Ideation: SPS Suicide Ideation subscale (Cull and Gill, 1989) Behaviour: None	BDI-Y ; Danish version (Thastum et al., 2009)	Unadjusted: Loneliness at baseline significantly predicted suicide ideation at follow-up. Adjusted: When depression was controlled for, loneliness was no longer a predictor of later suicidal ideation. Unadjusted: Those who reported self-harm ideation at follow-up had reported lower peer connectedness
McGraw et al. (2008) Australia	204* (59.8% female; 17.4 ± 0.6 years)	Child community sample	1 year	UCLA-R (Russell, Peplau and Cutrona, 1980)	Ideation: 1 item; 'I thought about hurting myself' Behaviour: None	DASS-21 (Lovibond and Lovibond, 1995)	(continued on next page)

Table 2 (continued)

Study/Country/Quality Assessment (QA) score(Max 9)/In meta-analysis (Y/N)	Sample demographics at baseline (n, % female, age)	Type of sample	Follow-up duration (average)	Measures Loneliness	Suicide	Depression	Results
QA score = 2 Meta-analysis: No		Ethnicity: 82% Australian					(therefore higher loneliness) at baseline.
Nickel et al. (2006) Germany, Austria and Poland QA score = 3 Meta-analysis: Yes	Group 1: N = 388 Patients with bulimia (purging type), no depression Group 2: N = 425 Patients with depression, no eating disorder (female only; 28 ± 4 years. N = 2,093 no suicidal ideation (8% female, 62.4 ± 13.8 years)	Adult mixed samples (inpatient, outpatient and community) Ethnicity NA	1 year	QoL, 1 item (Averbeck et al., 1997)	Ideation: None Behaviour: 1 item; attempting suicide in the last 12 months	None	Adjusted: None Unadjusted: Loneliness at baseline was identified as a significant predictor of suicide attempts in the 12-months post-baseline in the Bulimia Nervosa group but not the Major Depression group.
Pietrzak et al. (2017) USA QA score = 7 Meta-analysis: Yes	N = 2,093 no suicidal ideation (8% female, 62.4 ± 13.8 years)	Adult veteran sample Ethnicity: 78.5% Caucasian	4 years	Short Loneliness Scale	Ideation: PHQ-9, 1-item (Spitzer et al., 1999) Behaviour: None	None	Adjusted: None Unadjusted: Baseline loneliness was associated with increased incident of suicidal ideation at a later time point.
Salzinger et al. (2007) USA QA score = 5 Meta-analysis: Yes	Group 1: N = 100 urban school children registered on the NYC Maltreatment Register. Group 2: N = 100 healthy, matched controls. (35% female, 10.5 ± 0.9 years old)	Child community sample Ethnicity: 54% Hispanic, 38% black	6 ± 0.6 years	LSDQ (Asher et al. 1984)	Ideation: YRBS, 4-items. Behaviour: YRBS, 2 items (Garrison et al., 1993)	None	Adjusted: None Unadjusted: Loneliness did not predict suicide ideation or behaviour at follow-up. Adjusted: None
Schinka et al. (2013); SI T1-T3) [†] USA QA score = 5 Meta-analysis: Yes	N = 832 (51.1% female, 9 years)	Child school sample 79% Caucasian, 10.5% African American	4 years	LSDQ (Asher et al., 1984)	Ideation: CBCL 1-item self-report (Achenbach, 1992); YSR 1 item, parent report from YSR (Achenbach, 1991) Behaviour: None	CBCL; subscale (Achenbach, 1991).	Unadjusted: Loneliness did not predict suicidal ideation at follow-up. Adjusted: None
Schinka et al. (2013); SB T1-T3) [†] USA QA score = 5 Meta-analysis: Yes	N = 832 (51.1% female, 9 years)	Child school sample 79% Caucasian, 10.5% African American	4 years	LSDQ (Asher et al., 1984)	Ideation: None Behaviour: CBCL 1-item self-report (Achenbach, 1992); YSR 1 item, parent-report from YSR (Achenbach, 1991)	CBCL; subscale (Achenbach, 1991).	Unadjusted: Loneliness did not predict suicide attempt at follow-up. Adjusted: None
Schinka et al. (2013, T2-T3) [†] USA QA score = 5 Meta-analysis: Yes	N = 832 (51.1% female, 11 years)	Child school sample 79% Caucasian, 10.5% African American	6 years	LSDQ (Asher et al., 1984)	Ideation CBCL 1-item self-report (Achenbach, 1992); YSR 1 item, parent report from YSR (Achenbach, 1991) Behaviour: None	CBCL; subscale (Achenbach, 1991).	Unadjusted: Loneliness did not predict suicidal ideation at follow-up. Adjusted: None
Schinka et al. (2013, T2-T3) [†] USA QA score = 5 Meta-analysis: Yes	N = 832 (51.1% female, 11 years)	Child school sample 79% Caucasian, 10.5% African American	6 years	LSDQ (Asher et al., 1984)	Ideation None Behaviour: CBCL 1-item self-report (Achenbach, 1992); YSR 1 item, parent-report from YSR (Achenbach, 1991)	CBCL; subscale (Achenbach, 1991).	Unadjusted: Loneliness did not predict suicidal attempt at follow-up. Adjusted: None
Stein, Irtzaky and Levi-Belz (2017) Israel QA score = 6 Meta-analysis: Yes	Group 1: N = 163, Ex-prisoner of Kippur War (Male only, 53.4 ± 4.4 years) Group 2: N = 185 matched non-captive veterans (Male only, 53.4 ± 4.4 years approx.)	Adult ex-military 79% Caucasian, 10.5% African American	12 years	UCLA (Russell 1996)	Ideation: SCL-90, 2 items (Derogatis and Cleary, 1977) Behaviour: None	None	Unadjusted: Loneliness at baseline was not a significant independent predictor of suicide ideation at follow-up. Adjusted: None
Stolz et al. (2016) Europe			2 years			None	Unadjusted: Those who reported often feeling lonely, or who reported

(continued on next page)

Table 2 (continued)

Study/Country/Quality Assessment (QA) score(Max 9)In meta-analysis (Y/N)	Sample demographics at baseline (n, % female, age)	Type of sample	Follow-up duration (average)	Measures Loneliness	Suicide	Depression	Results
QA score = 4 Meta-analysis: Yes	N = 6,791 (57.6% female, 80.5 ± 4.5 years)	Adult community sample Ethnicity NA		1 item, 2-point categorical question; 'Do you often feel lonely?'	Ideation: EURO-D, 1 item from (Prince et al., 1995) Behaviour: None		an increase in feelings of loneliness were at increased risk of developing passive suicide ideation ($p < 0.001$). Adjusted: None
Trakhtenbrot et al. (2016) Israel QA score = 7 Meta-analysis: No	Group 1: N = 53, history of medically serious suicide attempt (MSSA); 41.5% female, 37.6 ± 12.25 years Group 2: N = 64 history of medically non-serious suicide attempt (MNSSA); 39.1% female, 37.74 ± 13.05 years Group 3: N = 36 Psychiatric inpatients (153 participants total; 40.27% female, 40.27 ± 13.26 years) N = 3,906 (56% female, 16.5 ± 1.9 years)	Adult psychiatric inpatient sample Ethnicity NA	5.6 ± 2.53 years	UCLA (Russell 1996)	Ideation: None Behaviour: Hospital records	BDI (Beck, 1978)	Unadjusted: None Adjusted: After controlling for demographic characteristics and mental pain domains, baseline loneliness was not a significant predictor of suicide behaviour at follow-up.
Wichström (2009) Norway QA score = 4 Meta-analysis: Yes		School-based general population Ethnicity NA	5 years	UCLA; 5-items (Russell et al. 1980)	Ideation: None Behaviour: 2-items; 'Taken an overdose of pills or otherwise tried to harm yourself on purpose?' Have you ever tried to kill yourself?	Depressive Mood Inventory (Kandel and Davies, 1982)	Unadjusted: Baseline loneliness scores were significantly different between those reporting no self-injury, NSSI and suicide attempts at follow-up. Adjusted: Multinomial logistic regression found loneliness to be a significant predictor of self-injury at follow-up after controlling for demographic characteristics and baseline variables

BDI = Beck Depression Inventory; BDI-Y = Beck Depression Inventory for Youth; CBCL = Child Behaviour Inventory for Children; CDI = Childrens Depression Inventory CES-D = Centre for Epidemiologic Studies Depression Scale; DASS-21 = Depression, Anxiety and Stress Scale; DISC-IV = Diagnostic Interview Schedule for Children; DSI = Depressive Symptom Inventory; EMA = Ecological Momentary Assessment; EURO-D = Euro- depression scale; LSDQ = Loneliness and Social Dissatisfaction Questionnaire; MIN = Mini-International Neuropsychological Interview; PHQ-9 = Patient Health Questionnaire-9; QoL = Quality of Life Questionnaire; SB = Suicide Behaviour; SI = Suicide ideation; SLC-5 = Hopkins Symptom Checklist; SCL-90 = Symptom Checklist-90; SIQ = Suicide Ideation Questionnaire; SPS = Suicide Probability Scale; SSI = Scale for Suicidal Ideation; T = Timepoint; UCLA = UCLA Loneliness Scale; UCLA-R = UCLA- Revised Scale; WHO CIDI = World Health Organisation Composite International Diagnostic Interview 3.0; YRBS = Youth Risk Behavior Survey; YSR = Youth Self-Report.

* Sample size and demographic data recorded at follow-up.

† Studies which share the same sample population from the NICHD study.

†† Suicide behaviour data was excluded due to insufficient data, see Appendix A for details.

Table 3
Controlled variables for adjusted univariate analysis between loneliness and SIB.

Study	Variables controlled
Ayalon and Shiovitz-Ezra (2011)	Age, gender, education, geographic region. Physical health: chronic conditions, activities of daily living, instrumental activities of daily living, health indicators: medical status Mental health: depressive symptoms, hope Social variables: marital status, parent alive, number of living siblings, number of living children, living arrangement, activity level
Bennardi et al. (2019)	Age, gender, years of education, baseline suicide ideation, heavy alcohol use, baseline depression and health status.
Joiner and Rudd (1996)	Hopelessness
Junker, Bjørngaard and Bjerkeset (2017)	Age, gender, cohabitation situation, socio-economic status/ parental education level at baseline
Kleiman et al., 2017, study 1)	Baseline suicidal ideation
Kleiman et al., 2017, study 2)	Baseline suicidal ideation
Lasgaard, Goossens and Elklit (2011)	Depression
Trakhtenbrot et al. (2016)	Age, gender Mental pain domain: mental pain, depression, hopelessness
Wichstrøm (2009)	Demographic characteristics: age, gender Baseline variables: self-injury

Fulginiti et al., 2018; Gallagher et al., 2014; Hom et al. 2019; Joiner and Rudd, 1996; Kleiman et al., 2017, Study 2; Pietrzak et al., 2017; Salzinger, 2007; Schinka et al., 2013) or Europe (n=9; Ayalon and Shiovitz-Ezra, 2011; Bennardi et al., 2019; Groholt et al., 2006; Joling et al., 2018; Junker et al., 2017; Lasgaard et al., 2011; Nickel et al., 2006; Stolz et al., 2016; Wichstrøm, 2009). Eight European studies identified a significant univariate relationship between loneliness and later suicidal ideation (Ayalon and Shiovitz-Ezra, 2011; Bennardi et al., 2019; Joling et al., 2018; Lasgaard et al., 2011; Stolz et al., 2016) and behaviour (Junker et al., 2017; Nickel, 2006; Wichstrøm, 2009). Groholt et al. (2006) did not identify a significant loneliness-SIB association however this study also had the smallest sample size. USA-based results were more equivocal, with five of the nine studies reporting a significant loneliness-SIB association including Gallagher et al. (2014) who reported a significant association in one analysis (between Time 2 and Time 3) but not in another (between Time 1 and Time 3).

Of the remaining studies, those conducted in Israel (Stein et al., 2017; Trakhtenbrot et al., 2016) or worldwide (Kleiman et al., 2017 Study 1) found that loneliness was not a significant predictor of SIB, while a significant association between loneliness and later suicidal ideation was identified in the Australian study (McGraw et al., 2008).

3.1.9. Other factors associated with the loneliness-SIB relationship

Other factors which were associated with the identification and detection of a loneliness-SIB relationship are summarised below. These include the measures employed in each study, as well as sample size, generalisability of the study sample to the target population, where participants were recruited from and duration of the follow-up.

3.1.10. Suicidal Ideation Measures

As noted in section 3.1.1, 17 studies recorded suicidal ideation (see table 2). Seven studies employed a single-item measure taken from a larger psychometric assessment (Ayalon and Shiovitz-Ezra, 2011; Fulginiti et al., 2018; Joling et al., 2018; 2008; Pietrzak et al., 2017; Schinka et al., 2013; Stein et al., 2017; Stolz et al., 2016) of which four identified loneliness as a significant predictor of later suicidal ideation. Studies which used a subscale from a wider measure (Bennardi et al., 2019; Hom et al., 2019; Joiner and Rudd, 1996; Lasgaard et al., 2011) consistently found an unadjusted univariate association between loneliness and SIB. Salzinger et al. (2007) measured suicidal ideation based on four items from a larger measure and found no significant association. Two studies (three results) using a bespoke questionnaire (Bonner and Rich, 1988; Gallagher et al., 2014, T2-T3), found a significant association whereas Gallagher et al. (2014, T1-T3) did not. The remaining three studies employed either a one- (McGraw et al., 2008) or three-item (Kleiman et al., 2017, Study 1; Kleiman et al., 2017, Study 2) non-validated suicidal ideation measure. Of these studies, only

McGraw et al. (2008) identified loneliness to be a significant predictor of SIB. Overall, 12 of the 17 studies that measured suicidal ideation found loneliness to be a significant predictor, however this reduced to ten studies once some studies controlled for other factors (see section 3.1.4).

3.1.11. Suicidal Behaviour Measures

Suicidal behaviour was measured in seven studies in this review (see table 2) with a total of six different measures. Five studies measured attempts to die by suicide (Groholt et al., 2006; Salzinger et al., 2007; Schinka et al., 2013; Trakhtenbrot et al., 2016; Wichstrøm, 2009), Schinka et al. (2013) was the only study to measure both suicide attempt and self-harm using one question while Wichstrøm (2009) measured these separately with one question each. All studies used self-report measures with the exception of Junker et al. (2017) and Trakhtenbrot et al. (2016) who used hospital records. No studies included suicide death as an independent outcome measure. Of the seven studies to measure suicidal behaviour, three identified a significant association; this included the three studies where self-harm was included as an outcome variable (Junker et al., 2017; Nickel et al., 2006; Wichstrøm, 2009). These three studies also had among the largest sample sizes and were based in Europe.

3.1.12. Loneliness Measures

Ten measures of loneliness were utilised across the studies included in this review. Six studies employed a single-item loneliness assessment; either an unvalidated one-word ecological monetary assessment (EMA; Kleiman et al., 2017, Study 1; Kleiman et al., 2017, Study 2), an unvalidated single-item question (Junker et al., 2017; Stolz et al. 2016), or used a validated item from a wider psychometric measure (Ayalon and Shiovitz-Ezra., 2011; Nickel et al., 2006). Only studies which used EMA (Kleiman et al., 2017, Study 1; Kleiman et al., 2017, Study 2) did not identify loneliness to significantly predict later SIB.

The four studies (9 results; Fulginiti et al., 2018; Gallagher et al., 2014, Salzinger et al., 2007; Schinka et al., 2013) which utilised the Loneliness and Social Dissatisfaction Questionnaire (LSDQ), all recruited participants aged ≤ 18 years in the USA. Only Gallagher et al. (2014, T1-T2) found a significant association between baseline loneliness and later SIB.

Ten studies (11 results) used a form of the UCLA Loneliness scale of which eight results reported a significant association (Bennardi et al., 2019; Bonner and Rich, 1988; Hom et al., 2019, T1-T3; Hom et al., 2019, T2-T3; Joiner and Rudd, 1996; Lasgaard et al., 2011; McGraw, 2008; Wichstrøm, 2009). Neither of the studies from Israel (based on psychiatric inpatient or veteran ex-prisoner of war populations), or from a Norwegian hospital (Groholt et al., 2006) found a significant loneliness-SIB association, while all studies which recruited from the general population in other countries did. The remaining two

studies used the De Jong Gierveld Loneliness Scale (Joling et al., 2018) or the Short Loneliness Scale (Pietrzak et al., 2017) and both identified loneliness as a significant predictor of suicidal ideation.

3.1.13. Sample Size

Sample sizes in the selected studies ranged from 36 (Kleiman et al., 2017, Study 2) to 12,107 (Ayalon and Shiovitz-Ezra, 2011) with the median sample size across the studies being 291 participants. Sample sizes ≥ 186 participants had a tendency to be more associated with a significant loneliness-SIB association.

3.1.14. Generalisability of Sample Population

Six studies stated that their study sample was generalizable to the target population (Bennardi et al., 2019; Fulginiti et al., 2018; Joiner and Rudd, 1996; Junker et al., 2017; Lasgaard et al., 2011; McGraw et al., 2008). However, these studies also reported significant participant attrition ($>40\%$). A further four studies (Bonner and Rich, 1988; Pietrzak et al., 2017; Salzinger et al., 2007; Schinka et al., 2013), either reported significant participant attrition ($>40\%$) or did not comment on attrition in their study. Nickel et al. (2006) and Salzinger et al. (2007) reported that their samples did not reflect their target populations. As three quarters of the studies included in this review were not likely to be representative of their target populations, the findings from these papers may not be generalisable to their respective populations.

3.1.15. Recruitment site: Geography

11 of the 14 studies which recruited exclusively from the general population identified loneliness as a significant predictor of later suicidal ideation (Ayalon and Shiovitz-Ezra, 2011; Bennardi et al., 2019; Bonner and Rich, 1988; Hom et al., 2019; Joiner and Rudd et al., 1996; Joling et al., 2018; Lasgaard et al., 2011; McGraw et al., 2008; Stolz et al., 2016) or behaviour (Junker et al., 2017; Wichstrøm, 2009). Of the three general population-based studies which did not identify loneliness as a significant predictor, two were from the United States (Salzinger et al., 2007; Schinka et al., 2013) and two contained sample sizes significantly below the median (Kleiman et al., 2017, Study 1; Salzinger et al., 2007).

Of the three studies (4 results) which recruited exclusively from psychiatric inpatient populations, only Gallagher et al. (2014, T2–T3) found that loneliness was a significant predictor of later SIB. Additionally, Nickel (2006) recruited a combination of inpatient, outpatient and community-based participants with a larger sample size and identified loneliness as a significant predictor of later suicidal behaviour. Pietrzak et al. (2017) and Stein et al. (2017) both recruited from veteran populations with contrasting results, however the heterogeneity of those studies made it impossible to infer the reasons for the conflicting findings.

3.1.16. Follow-Up Duration

Follow-up duration ranged from an average of seven days (Kleiman et al., 2017, Study 2) to 12 years (Stein et al., 2017). Loneliness was commonly found to be a significant predictor of SIB between one month to five years after baseline loneliness assessment (Ayalon and Shiovitz-Ezra, 2011; Bennardi et al., 2019; Bonner and Rich, 1988; Fulginiti et al., 2018; Gallagher et al., 2014; Hom et al., 2019; Joiner and Rudd, 1996; Joling et al., 2018; Lasgaard et al., 2011; McGraw, 2008; Nickel et al., 2006; Pietrzak et al., 2017; Stolz et al., 2016; Wichstrøm, 2009). Of the 18 results within this timespan, only four results were not significant (Fulginiti et al., 2018; Gallagher et al., 2014, T1–T3; Schinka et al., 2013, T2–T3 ideation; Schinka et al., 2013, T2–T3 behaviour). Commonalities between these non-significant results included the recruitment of some of the youngest participants within this review and all studies used the LSDQ measure for loneliness. Only two of the studies with follow-ups of less than a month (Kleiman et al., 2017, Study 1; Kleiman et al., 2017, Study 2) yielded non-significant

results, while only one study (Junker et al., 2017) of the six which measured beyond five years found a significant result. A distinguishing feature of Junker et al. (2017) was that they recruited significantly more participants than the other studies where follow-up was out-with the 1 month–5-year timeframe.

3.2. Meta-analysis

17 studies were included within the meta-analysis to explore the association between loneliness and later SIB. However as there were differences in data availability across the studies, the number of studies reported within each section of the meta-analysis varies.

The meta-analytic findings are described as follows:

- i Identification of a loneliness-SIB relationship
- ii Methodological quality
- iii Moderating effects of socio-demographic characteristics (age, gender) on to the loneliness-SIB relationship;
- iv The role of depression as a mediator of the loneliness-SIB relationship;

3.2.1. Association between loneliness and SIB

Effect sizes for the overall study samples were entered into the meta-analysis irrespective of whether the outcome was ideation, self-harm or suicide attempts. To prevent over-representation of study samples, overall effect sizes were calculated for studies where loneliness was measured at more than one timepoint. This resulted in 17 studies with one effect size calculated for each study. With the exception of both Bennardi et al. (2019) who controlled for multiple demographics and health factors, and Junker et al. (2017) who controlled for age, all effect sizes were unadjusted. A random effects model illustrated that loneliness was a significant predictor of later SIB ($r = 0.21$ 95% CI: 0.14–0.28, $z = 5.97$, $p < 0.001$). Although there was significant statistical heterogeneity across the studies ($I^2 = 97.5\%$, Cochrane Q: 647.501 $p < 0.001$), there was no publication bias (Classic Fail-Safe N = 4473; z -value = 31.84998, $p < 0.00001$) as illustrated by the funnel plot in Fig. 3. Two papers (Salzinger et al., 2007; Schinka et al., 2013) measured both suicidal ideation and behaviour as outcome variables. To avoid over-representation, these papers were excluded from the moderation analysis to explore any statistical difference between loneliness predicting suicidal ideation compared to behaviour. Moderation analysis revealed that the effect sizes for suicidal ideation and behaviour were significantly different ($Q(1) = 181.566$, $p < 0.001$) with fixed effects models showing that that loneliness was a stronger predictor of suicidal behaviour ($r = 0.28$, 95% CI: 0.23–0.3, $p < 0.001$, $n = 6$ studies) than suicidal ideation ($r = 0.16$, 95% CI: 0.15–0.17, $p < 0.001$, $n = 13$ studies).

3.2.2. Methodological quality

Moderation analysis indicated that the quality assessment score was not a statistically significant moderator of the loneliness-SIB relationship.

3.2.3. Moderating effect of age

13 studies provided sufficient data to explore whether age moderated the association between loneliness and SIB. Moderation analysis indicated that age did not statistically affect the loneliness and later SIB relationship. However, there was a dearth of studies covering mid-life (25 to 55 years; see Fig. 4).

3.2.4. Moderating effect of gender

All 17 studies were included in the moderation analysis to explore loneliness predicting SIB as a function of gender. Overall, fixed-effects moderation analysis indicated that in the majority female studies ($n = 13$ studies) loneliness accounted for 15.5% of the variance in later SIB (95% CI 0.144, 0.167, $p < 0.001$) whereas in majority male studies ($n = 4$) loneliness accounted for 34.4% of the SIB variance (95% CI

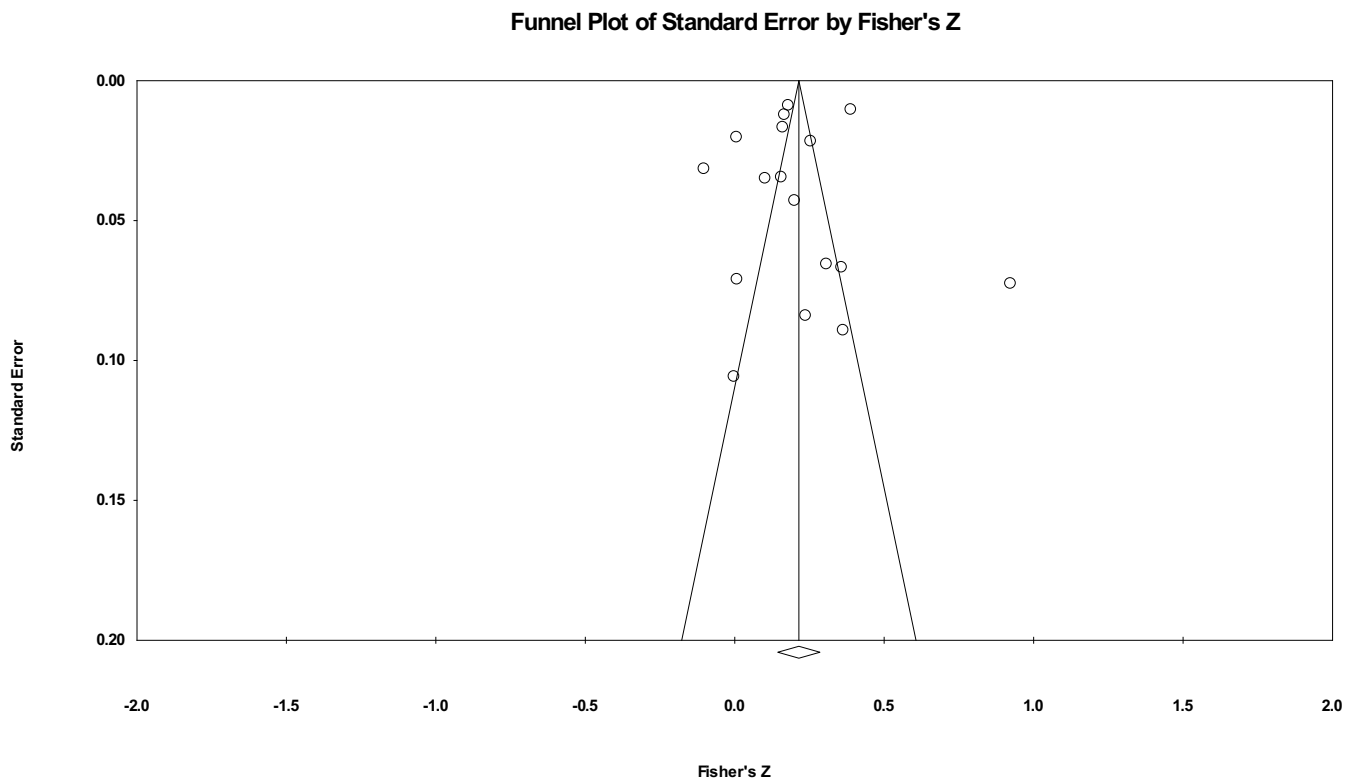


Fig. 3. Funnel plot illustrating publication bias following a random effects model of overall effect sizes included in meta-analysis ($n = 17$). The effect sizes appear to be symmetrically distributed on either side of the mean effect size which is illustrated by the vertical line. As all studies ($n = 17$) are in the top-half of the funnel, this indicates that most studies used a large sample size.

0.327, 0.360, $p < 0.001$). However, there was significant heterogeneity across both groups of studies ($Q(15) = 314.884$, $p < 0.001$) and a mixed effects model showed there was no significant difference between the dichotomised groups (males vs females) or when gender was reported as a continuous variable (percentage of sample being female).

3.5. Depression as a mediator of loneliness and later SIB

16 studies were available to explore whether depression mediated the association between loneliness and later SIB (see [Appendix C](#) for a list of included studies). For studies with multiple results, a single correlation value was calculated between each combination pair of the three variables (loneliness, depression, SIB). Models were run from a correlation matrix and specified in MPlus 8.4 ([Muthén and Muthén, 2017](#)) using maximum likelihood estimation. Of the 16 papers that were included in the present analysis, the number of studies from which data were provided was as follows; associations between loneliness and depression ($N = 6$), depression and SIB ($N = 11$) and loneliness and SIB ($N = 16$). Based on this the following estimates were entered into the meta-analytic mediation model: (1) the average association between loneliness and depression ($r = .3617$), depression and SIB ($r = .3227$) and loneliness and SIB ($r = .1713$). The sample sizes ranged from 78 to 12,107, the median sample size was 387 and the average was 1862. Based on the average sample size the relationships between loneliness and depression ($\beta = 0.362$, $p < 0.001$), depression and SIB ($\beta = 0.300$, $p < 0.001$) and loneliness and SIB ($\beta = 0.063$, $p = .007$) were all significant as was the indirect effect from loneliness to SIB via depression ($\beta = 0.109$, $p < 0.0001$). Based on the median sample size the relationship between loneliness and depression and depression and SIB remained significant but loneliness and suicide ideation/behaviour was now non-significant. However, there was still a significant indirect effect from loneliness to SIB via depression ($\beta = 0.109$, $p < .0001$).

4. Discussion

This review aimed to synthesise findings from existing studies pertaining to whether loneliness predicted later SIB, and if so, whether socio-demographic factors were associated with this relationship or depression acted as a mediator. Of the 22 studies (28 results) that met review criteria, 14 studies (15 results) found that loneliness was a significant predictor of later SIB. There was also evidence that depression mediated the loneliness and later SIB relationship. Of all studies considered within the narrative component of the review, the loneliness-SIB association was more frequently observed in studies that were predominantly female in composition and age-dependent effects were evident.

The finding that loneliness predicted later SIB fits with several theories of the emergence of SIB. For example, the IMV model ([O'Connor and Kirtley, 2018](#)) argues that loneliness may act similarly to social isolation which is included in the model. If so, loneliness may act as a motivational phase factor; increasing the likelihood that entrapment, a key precursor of suicidal ideation, develops. The Interpersonal Theory of Suicide (ITS; [Van Orden et al., 2010](#)) also suggests that loneliness in the form of thwarted belongingness is an important predictor of suicidal behaviour.

Loneliness was more strongly associated with SIB in the longer term compared to in the short-term. This may relate to the stability of loneliness, if present over long time being more pernicious, although this requires more detailed investigation. The moderation analysis revealed that loneliness was a stronger predictor of suicidal behaviour than of suicidal ideation. It is important to note though, that although suicide attempts were assessed in many of the studies, no study measured suicide death. Additionally, the potential lethality or suicidal intent of the suicidal acts were not investigated in the review. The meta-analysis also found that depression mediated the relationship between loneliness and later SIB. Further research is required to determine the

Regression of Fisher's Z on Age

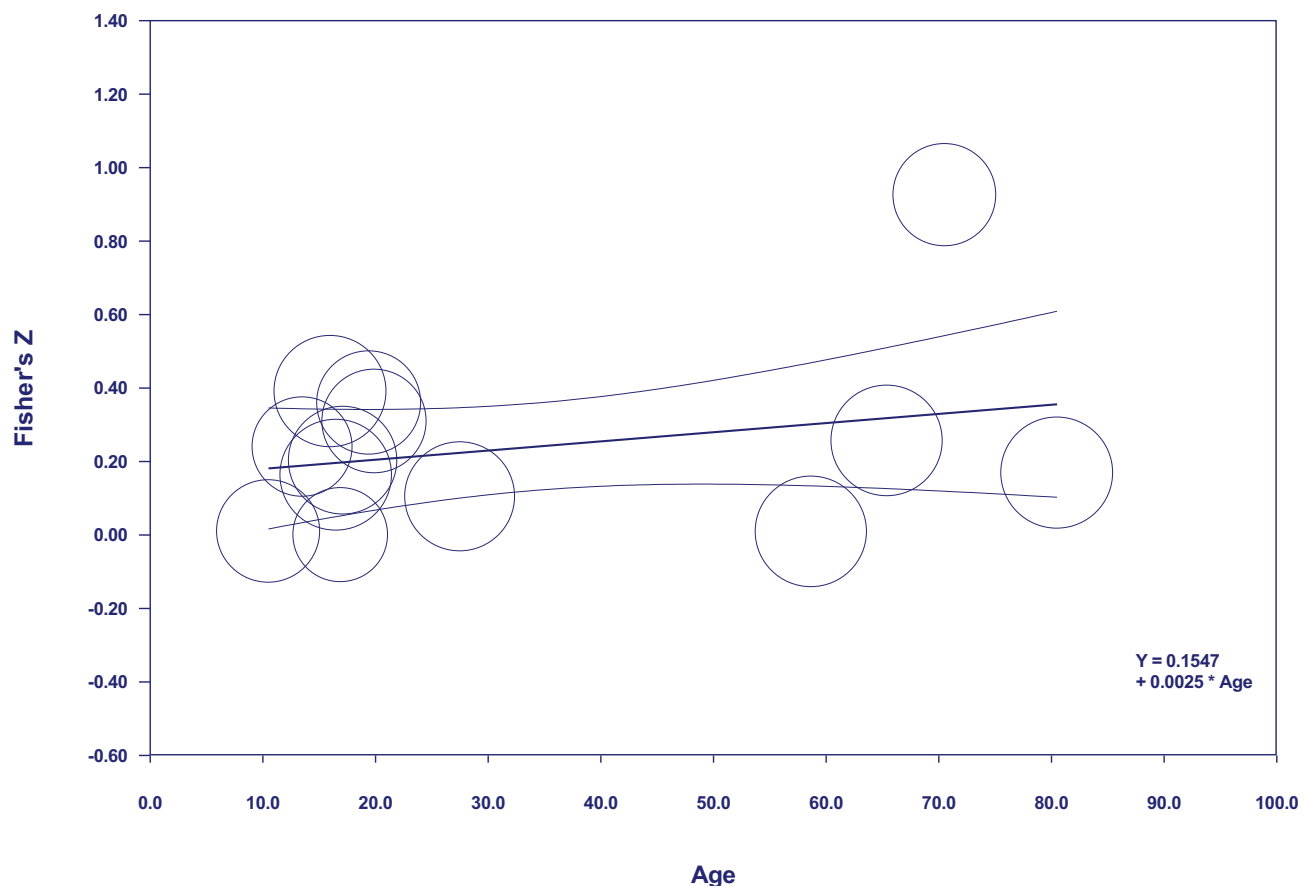


Fig. 4. Age as a continuous moderator between loneliness and later SIB.

Combined effect sizes for all studies with multiple outputs (i.e. Gallagher et al., 2014; Hom et al., 2019; Salzinger et al., 2007; Schinka et al., 2013)

potential mechanisms through which loneliness may lead to depression.

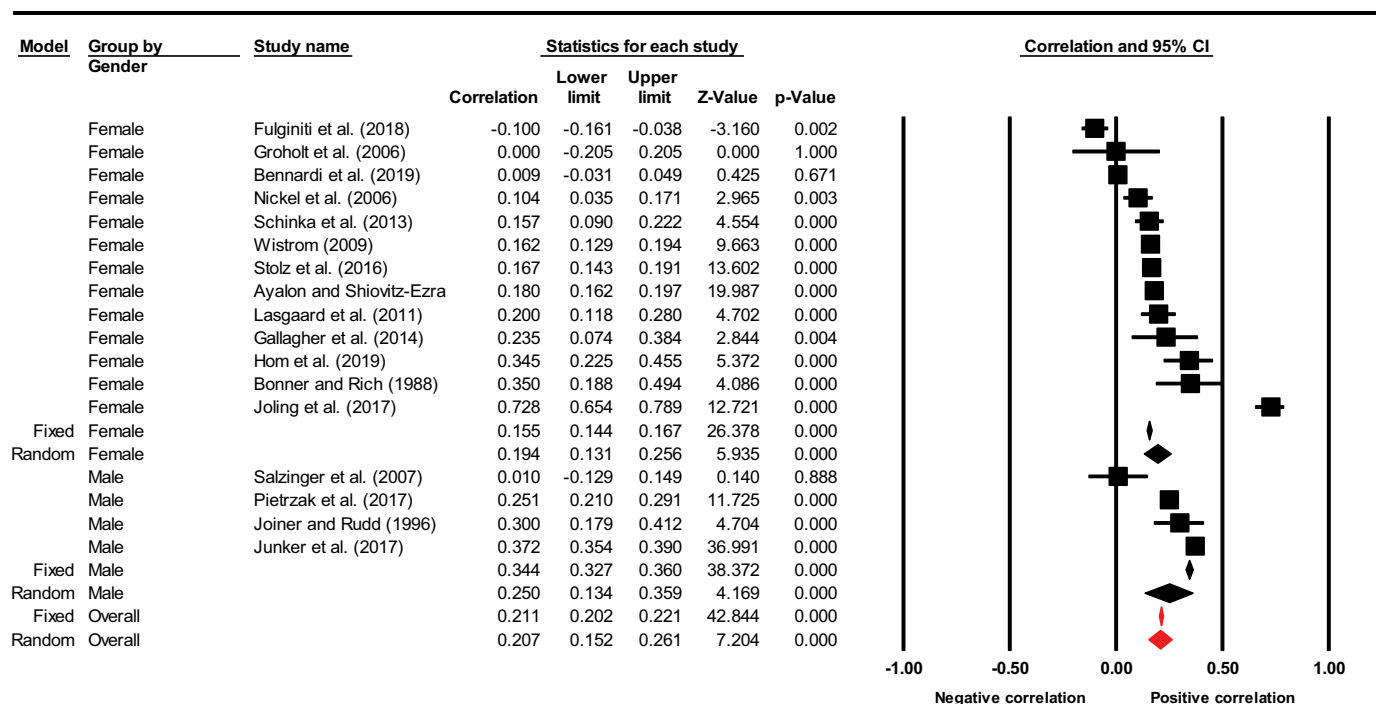
Of the subsample of studies included in the moderation analysis exploring gender as a moderator of loneliness and SIB, no statistically significant difference was identified. However, when considering all studies included in this review, a large majority of studies comprising of mainly female participants identified loneliness as a predictor of later SIB compared to male-dominant studies which remained at chance-level. However, it is important to note that the male participants were particularly under-represented in this review. Despite this, any potential gender differences may be affected by social stigma which is associated with self-reporting loneliness in male populations (Borys and Perlman, 1985; Nicolaisen and Thorsen, 2014), with those of Western countries reportedly being less accepting of men disclosing loneliness. Nicolaisen and Thorsen (2014) suggested that the De Jong Gierveld measures may be the only studies to detect gender differences due to their assessment of social and emotional loneliness separately, however only one study here used the scale and did not explore gender differences. Finally, all studies in the review reported gender on a binary scale, which may have affected the findings. Future research investigating the loneliness-SIB relationship may benefit from reporting the loneliness-SIB relationship in non-binary populations when capturing demographic information.

With regard to age, observations made in this review supported existing research (Victor and Yang, 2012) in that the loneliness-SIB relationship was more likely to be identified in those aged 16–20 or >58 years at baseline, thereby suggestive of a U-shaped trend. It may be that these two age groups coincide with when loneliness peaks

across the lifespan as major transitions in social status occur: school graduate (e.g. student to young adult/ labour market) and working adult to retiree. Nicolaisen and Thorsen (2014) argue that at these social transition timepoints, individuals spend more time focusing on their next role in society, thereby loosening ties with existing social supports (e.g. school friends, colleagues). As the transition progresses, new bonds are established and the maintenance of former social bonds become more difficult. If these new bonds are not formed, or social identity is not suitably adjusted, this may create an opportunity for loneliness to develop.

Despite this age-related trend, two studies (Ayalon and Shiovitz-Ezra, 2011; Bennardi et al., 2019) noted a ‘drop-off’ in the loneliness-SIB relationship in adults aged approximately 65 years old. It could be argued that the transition from working adult to retiree had already happened for those aged >65 years old, where these populations had already adjusted to their new role in society, leading to this loss in the loneliness-SIB association. Both Ayalon and Shiovitz-Ezra (2011) and Bennardi et al. (2019) postulated this observation was perhaps due to loneliness being considered ‘an on-time event’ (Ayalon and Shiovitz-Ezra, 2011) due to the limitations associated with older age (e.g. diminishing social life, the death of older and frailer friends and family, one’s own limited health and mobility) while trying to maintain a social life.

Commonalities across studies were also observed in terms of geography. Most of studies in this review were from Europe or from the United States, however virtually all of the European studies found a significant relationship between loneliness and later SIB while USA-



Meta Analysis

Fig. 5. Forest plot between gender

based results were more variable. Research comparing the prevalence of loneliness across continents is limited, therefore there is little room for speculation regarding observed or hypothesised differences. Despite this, it is important to highlight that the European-based studies often had larger sample sizes than other countries in this review, as well as having more female-dominant sample populations. The findings here suggest the loneliness-SIB relationship is more detectable in studies with larger participant sample sizes (potential small effects). However, as females were over-represented in this review and the range of geographical locations of studies was limited, it is not yet possible to infer whether geography or gender moderate the relationship between loneliness and SIB. Lastly, while most studies used interviews or paper questionnaires to assess the key measures, two studies used EMA (Kleiman et al., 2017, Study 1; Kleiman et al., 2017, Study 2) and these were outliers in respect of trends observed (e.g. gender and follow-up duration). Thus, the mode of measurement may influence whether a loneliness–SIB relationship is detected. Therefore, future research is required to better understand whether EMA studies of loneliness are exploring something different from traditional study measurement scales.

4.1. Limitations

The considerable heterogeneity across the studies means that the aggregate findings discussed here should be interpreted with caution. Although this review finds evidence that loneliness may predict SIB, the definition of suicidal behaviour and its constituent terms (e.g. self-harm, suicide attempt) varied considerably between studies (as illustrated by Nickel et al., 2006 see Appendix A). Furthermore, no studies included suicide death as a distinct outcome measure. For example, although Groholt et al. (2006) excluded participants who were deceased at follow-up, their study did include two participants who died by suicide. Meanwhile Trakhtenbrot et al. (2016) included all participants who died by suicide within their suicide attempt group but did

not make any comparisons between those who had died or survived. These limitations prevent this review from fully exploring the extent to which loneliness predicts SIB in relation to the full range of suicide attempt outcomes. However, this does illustrate that suicide death as an outcome variable is lacking in the extant literature.

With regard to predictors of a loneliness-SIB association, female-dominant studies typically had larger participant sample sizes and were usually based in Europe. Observationally, these three features (gender, locality and sample size) were consistently associated with identifying a significant relationship between loneliness and later SIB so it is not possible to distinguish which of these elements is the most influential. Meta-analysis did not reveal any of these features to influence the loneliness-later SIB association, however certain factors must be considered when interpreting these results. For example, male populations were under-represented in this review. Furthermore, studies with a participant baseline age of less than 18 years old accounted for half of the results considered here, and no study with a mean participant age between 24 and 55 provided sufficient data to be included in a meta-analysis investigating age as a moderator.

Finally, an exclusion criterion for this review was that studies must have been available in English, therefore not all published works on the topic of loneliness in relation to later SIB may have been included. This may be reflected by the absence of studies based in Asia or Africa, where papers on this topic may have been written in a non-English language. Additionally, all studies were from Western countries where self-reliance and independence (i.e. individualism) is the cultural norm. Research indicates that when compared to collectivism, individualism is a protective factor against loneliness (Lykes and Kimmelmeier, 2014), which would suggest that the loneliness-SIB relationship may be stronger in countries not addressed in this review. Due to the lack of collectivist countries included in this review, comparisons could not be made to identify whether these results were limited to individualistic populations or were internationally applicable.

4.2. Conclusion

In conclusion, loneliness was shown to predict future SIB in both the narrative review and meta-analysis. There was evidence of a loneliness and later SIB relationship among those aged 16 to 20 years, or over 58 years at baseline and in participant samples that were predominantly female. However, these differential relationships were not supported by moderation analyses in a subsample of the studies. Mediation analysis found that depression acted as a mediator of the loneliness to later SIB relationship. Finally, it was observed that loneliness was particularly predictive of later SIB in the short to medium term (up to five years). No prospective studies specifically measured suicide death as an outcome measure and future research would benefit from studying more collectivist cultures.

Conflict of Interest and Authorship Conformation Form

All authors have participated in conception and design, of the study article, revising drafts of the manuscript critically for important intellectual content and all authors approve of the final version.

This manuscript has not been submitted to, nor is under review at, another journal or other publishing venue.

The authors have no affiliation with any organization with a direct or indirect financial interest in the subject matter discussed in the manuscript

Contributors

HMc conducted the literature search, data extraction and synthesis of the data. RO and JE guided the conception of the study and development of the study aims. EF advised and guided all meta-analyses. HM, JE, RN, EF and RO all made valuable contributions to the development of the final manuscript. All authors approved the final manuscript

Role of Funding Sources

No funding.

Acknowledgement

The authors have received no financial support for the research, authorship, and/or publication of this article.

Supplementary materials

Supplementary material associated with this article can be found, in the online version, at [doi:10.1016/j.jad.2020.05.004](https://doi.org/10.1016/j.jad.2020.05.004).

Appendix A. Clarification of included studies

- 1 Kleiman et al., 2017 contained two studies with separate methods and participants so was split for the purpose of this review and are referred to as; Kleiman et al., 2017, study 1) and Kleiman et al., 2017, study 2).
- 2 Nickel et al. (2006) refers to their outcome variable as 'suicide attempts', however the authors of this review believed the criteria set by Nickel et al. (2006) was more reflective of suicide behaviour in general and is therefore categorised as such in this review.
- 3 Pietrzak et al. (2017) is a letter to the editor instead of a peer-reviewed article. As this paper met all study criteria and was still published in a peer-reviewed journal, it was agreed between the review authors that this study would be included.
- 4 Bennardi et al. (2019) did not provide results on suicidal behaviour due to lack of data, therefore only the results regarding suicidal ideation are considered for this review.

- 5 Gallagher et al. (2014), Hom et al. (2019) and Schinka et al. (2013) all reported two effect sizes between loneliness and later SIB, where loneliness was measured at different timepoints (referred to as T1 and T2) and SIB measured at a single later timepoint (T3). These results are therefore referred to based on their timepoint of loneliness and SIB assessments and where appropriate, their outcome measure (ideation vs. behaviour). See Table 2 for further details.

Appendix B. Reasons for studies not included in the meta-analysis

- Two authors (Stein et al., 2017; Trakhtenbrot et al., 2016) did not respond to review authors request for further information.
- One author (McGraw et al., 2008) no longer had access to the raw data to required to be included in the meta-analysis.
- Two studies (Kleiman et al., 2017, study 1 and 2) used Ecological Momentary Assessment (EMA) which is unsuitable for the analyses of the current meta-analysis.

Appendix C. Studies included in the mediation analysis of loneliness and SIB as a function of depression

Ayalon and Shiovitz (2011); Bennardi (2019); Bonner and Rich (1988); Fulginiti et al. (2018); Gallagher et al. (2014); Groholt et al. (2006); Hom et al. (2019); Joiner and Rudd (1996); Lasgaard et al. (2011); McGraw et al. (2008); Nickel et al. (2006); Pietrzak et al. (2017); Salzinger et al. (2007); Schinka et al. (2013); Stolz et al. (2016); Wistrom (2009).

References

- Achenbach, T.M., 1991. Manual for the youth self-report and 1991 profile. Department of Psychiatry, University of Vermont, Burlington, VT.
- Achenbach, T.M., 1992. Manual for the Child Behavior Checklist/2-3 and 1992 profile. Department of Psychiatry, University of Vermont.
- Asher, S.R., Hymel, S., Renshaw, P.D., 1984. Loneliness in Children. *Child Dev.* 55, 1456–1464.
- Averbeck, M., Leiberich, P., Grote-Kusch, M., Olbrich, E., Schröder, A., Brieger, M., Schumacher, K., 1997. SEL; Skalen zur Erfassung der Lebensqualität. Frankfurt aM: Swets & Zeitlinger BV (Swets Test Services).
- Ayalon, L.S.-E., Sharon, 2011. The relationship between loneliness and passive death wishes in the second half of life. *Int. Psychogeriatr.* 23, 1677–1685.
- Batigun, A.D., 2005. Suicide probability: An assessment terms of reasons for living, hopelessness and loneliness. *Turk. Psikiyatri. Dergisi.* 16, 29–39.
- Beck, A.T., Steer, R.A., Carbin, M.G., 1988. Psychometric properties of the Beck Depression Inventory: Twenty-five years of evaluation. *Clin. Psychol. Rev.* 8, 77–100.
- Bennardi, M., Caballero, F.F., Miret, M., Ayuso-Mateos, J.L., Haro, J.M., Lara, E., Arensman, E., Cabello, M., 2019. Longitudinal relationships between positive affect, loneliness, and suicide ideation: age-specific factors in a general population. *Suicide Life-Threat. Behav.* 49, 90–103.
- Beutel, M.E., Klein, E.M., Brähler, E., Reiner, I., Jünger, C., Michal, M., Wiltink, J., Wild, P.S., Münzel, T., Lackner, K.J., Tibubos, A.N., 2017. Loneliness in the general population: prevalence, determinants and relations to mental health. *BMC Psychiatry* 17.
- Bondevik, M., Skogstad, A., 1998. The Oldest Old, ADL, Social Network, and Loneliness. *West. J. Nurs. Res.* 20, 325–343.
- Bonner, R.L., Rich, A.R., 1988. A prospective investigation of suicidal ideation in college students: A test of a model. *Suicide Life-Threat. Behav.* 18 (3), 245–258.
- Borys, S., Perlman, D., 1985. Gender differences in loneliness. *Personal. Soc. Psychol. Bull.* 11, 63–74.
- British Red Cross, 2016. Trapped in a bubble: An investigation into triggers for loneliness in the UK.
- Cacioppo, J.T., Hughes, M.E., Waite, L.J., Hawkley, L.C., Thisted, R.A., 2006. Loneliness as a specific risk factor for depressive symptoms: cross-sectional and longitudinal analyses. *Psychol. Aging* 21, 140.
- Calati, R., Ferrari, C., Britner, M., Oasi, O., Olié, E., Carvalho, A.F., Courtet, P., 2019. Suicidal thoughts and behaviors and social isolation: A narrative review of the literature. *J. Affect. Disord.* 245, 653–667.
- Chang, Q., Chan, C.H., Yip, P.S.F., 2017. A meta-analytic review on social relationships and suicidal ideation among older adults. *Soc. Sci. Med.* 191, 65–76.
- Borenstein, M., Hedges, L., Higgins, J., Rothstein, H., 2013. *Comprehensive Meta-Analysis Version 3*. Biostat, Englewood, NJ.
- Cull, J.G., Gill, W.S., 1989. Suicide probability scale (SPS). Western Psychological Services, Los Angeles.
- de Jong-Gierveld, J., Kamphuis, F., 1985. The development of a Rasch-type loneliness scale. *Appl. Psychol. Meas.* 9, 289–299.
- De Jong Gierveld, J., Van Tilburg, T., 2010. The De Jong Gierveld short scales for

- emotional and social loneliness: tested on data from 7 countries in the UN generations and gender surveys. *Europ. J. Ageing* 7, 121–130.
- Derogatis, L.R., Cleave, P.A., 1977. Confirmation of the dimensional structure of the scl-90: a study in construct validation. *J. Clin. Psychol.* 33, 981–989.
- Franklin, J.C., Ribeiro, J.D., Fox, K.R., Bentley, K.H., Kleiman, E.M., Huang, X., Musacchio, K.M., Jaroszewski, A.C., Chang, B.P., Nock, M.K., 2017. Risk factors for suicidal thoughts and behaviors: a meta-analysis of 50 years of research. *Psychol. Bull.* 143, 187.
- Fulginiti, A., He, A.S., Negriff, S., 2018. Suicidal because I don't feel connected or vice versa? A longitudinal study of suicidal ideation and connectedness among child welfare youth. *Child Abuse. Negl.* 86, 278–289.
- Gallagher, M., Prinstein, M.J., Simon, V., Spirito, A., 2014. Social anxiety symptoms and suicidal ideation in a clinical sample of early adolescents: Examining loneliness and social support as longitudinal mediators. *J. Abnorm. Child Psychol.* 42 (6), 871–883.
- Groholt, B., Ekeberg, Ø., Haldorsen, T., 2006. Adolescent suicide attempters: what predicts future suicidal acts? *Suicide Life-Threat. Behav.* 36 (6), 638–650.
- Hawton, K., Casañas i Comabella, C., Haw, C., Saunders, K., 2013. Risk factors for suicide in individuals with depression: a systematic review. *J. Affect. Disord.* 147, 17–28.
- Hedley, D., Uljarević, M., Foley, K.-R., Richdale, A., Trollor, J., 2018. Risk and protective factors underlying depression and suicidal ideation in Autism Spectrum Disorder. *Depress. Anxiety.*
- Government, HM, 2018. In: Media and Sport, C. (Ed.), Department for Digital Crown copyright.
- Holt-Lunstad, J., Smith, T.B., Baker, M., Harris, T., Stephenson, D., 2015. Loneliness and social isolation as risk factors for mortality: a meta-analytic review. *Perspect. Psychol. Sci.* 10, 227–237.
- Hom, M.A., Stanley, I.H., Chu, C., Sanabria, M.M., Christensen, K., Albury, E.A., ..., Joiner, T.E., 2019. A longitudinal study of psychological factors as mediators of the relationship between insomnia symptoms and suicidal ideation among young adults. *J. Clin. Sleep Med.: JCSM: Off. Publ. Am. Acad. Sleep Med.* 15 (1), 55–63.
- Joiner Jr., T.E., Rudd, M.D., 1996. Disentangling the interrelations between hopelessness, loneliness, and suicidal ideation. *Suicide Life-Threat. Behav.* 26, 19–26.
- Joiner Jr, T.E., Pfaff, J.J., Acres, J.G., 2002. A brief screening tool for suicidal symptoms in adolescents and young adults in general health settings: reliability and validity data from the Australian national general practice youth suicide prevention project. *Behav. Res. Ther.* 40 (4), 471–481.
- Joling, K.J., O'Dwyer, S.T., Hertogh, C.M.P.M., van Hout, H.P.J., 2018. The occurrence and persistence of thoughts of suicide, self-harm and death in family caregivers of people with dementia: a longitudinal data analysis over 2 years. *Int. J. Geriatr. Psychiatry* 33, 263–270.
- Junker, A., Bjørngaard, J.H., Bjerkeset, O., 2017. Adolescent health and subsequent risk of self-harm hospitalisation: a 15-year follow-up of the Young-HUNT cohort. *Child Adolesc. Psychiatry Ment. Health* 11, 25–25.
- Kessler, R.C., Üstün, T.B., 2004. The world mental health (WMH) survey initiative version of the World Health Organization (WHO) composite international diagnostic interview (CIDI). *Int. J. Methods Psychiatr. Res.* 13, 93–121.
- Kleiman, E.M., Turner, B.J., Fedor, S., Beale, E.E., Huffman, J.C., Nock, M.K., 2017 Study 1. Examination of real-time fluctuations in suicidal ideation and its risk factors: results from two ecological momentary assessment studies. *J. Abnorm. Psychol.* 126, 726–738.
- Kleiman, E.M., Turner, B., Fedor, S., Beale, E.E., Huffman, J.C., Nock, M.K., 2017 Study 2. Examination of real-time fluctuations in suicidal ideation and its risk factors: results from two ecological momentary assessment studies. *J. Abnorm. Psychol.* 126, 726–738.
- Kleiman, E.M., Turner, B.J., Fedor, S., Beale, E.E., Huffman, J.C., Nock, M.K., 2017. Examination of real-time fluctuations in suicidal ideation and its risk factors: results from two ecological momentary assessment studies. *J. Abnorm. Psychol.* 126, 726–738.
- Kovacs, M., Preiss, M., 1992. *CDI. Children's Depression Inventory Multi-Health Systems.* New York.
- Lasgaard, M., Goossens, L., Elklit, A., 2011. Loneliness, depressive symptomatology, and suicide ideation in adolescence: cross-sectional and longitudinal analyses. *J. Abnorm. Child Psychol.* 39, 137–150.
- Loneliness Taskforce, 2018. *A Connected Island; An Ireland Free From Loneliness.* Loneliness Taskforce.
- Lovibond, P.F., Lovibond, S.H., 1995. The structure of negative emotional states: comparison of the depression anxiety stress scales (DASS) with the beck depression and anxiety inventories. *Behav. Res. Ther.* 33, 335–343.
- Lykes, V.A., Kimmelmeier, M., 2014. What predicts loneliness? cultural difference between individualistic and collectivistic societies in Europe. *J. Cross-Cult. Psychol.* 45, 468–490.
- Maes, M., Qualter, P., V., J., V.D.N., W., G., L., 2019. Gender differences in loneliness in children and adolescents: A meta-analysis. In: Biennial meeting of the Society for Research in Child Development.
- Mars, B., Heron, J., Klonsky, E.D., Moran, P., O'Connor, R.C., Tilling, K., Wilkinson, P., Gunnell, D., 2019. Predictors of future suicide attempt among adolescents with suicidal thoughts or non-suicidal self-harm: a population-based birth cohort study. *Lancet Psychiatry* 6, 327–337.
- McGraw, K.M., Susan, Fuller, Andrew, Bates, Glen, 2008. Family, peer and school connectedness in final year secondary school students. *Aust. Psychol.* 43, 27–37.
- Metalsky, G., 1991. *The depressive symptom index.* Unpublished manuscript.
- Moher, D., Shamseer, L., Clarke, M., Ghersi, D., Liberati, A., Petticrew, M., Shekelle, P., Stewart, L.A., Group, P.-P., 2015. Preferred reporting items for systematic review and meta-analysis protocols (PRISMA-P) 2015 statement. *Syst. Rev.* 4, 1.
- Mushtaq, R., Shuib, S., Shah, T., Mushtaq, S., 2014. Relationship between loneliness, psychiatric disorders and physical health ? A review on the psychological aspects of loneliness. *J. Clin. Diagn. Res.* 8, WE01–WE04.
- Muthén, L.K., Muthén, B.O., 2017. *Mplus User's Guide, Eighth Edition.* Muthén & Muthén, Los Angeles, CA.
- National Institute for Health and Care Excellence (NICE), 2011. *Self-harm in over 8s: long-term management.*
- Nickel, M.K.S., M., Lojewski, N., Muehlbacher, M., Fartacek, R., Kettler, C., Bachler, E., Egger, C., Rother, N., Buschmann, W., Gil, F.P., Kaplan, P., Mitterlehner, F.O., Anvar, J., Rother, W.K., Loew, T.H., Nickel, C., 2006. Familial and sociopsychopathological risk factors for suicide attempt in bulimic and in depressed women: prospective study. *Int. J. Eat. Disord.* 39, 410–417.
- Nicolaisen, M., Thorsen, K., 2014. Who are lonely? loneliness in different age groups (18–81 years old), using two measures of loneliness. *Int. J. Aging Hum. Dev.* 78, 229–257.
- Nock, M.K., Prinstein, M.J., 2005. Contextual features and behavioral functions of self-mutilation among adolescents. *J. Abnorm. Psychol.* 114, 140–146.
- O'Connor, R., 2011. Towards an integrated motivational-volitional model of suicidal behaviour.
- O'Connor, R.C., Kirtley, O.J., 2018. The integrated motivational-volitional model of suicidal behaviour. *Philos. Trans. R. Soc. B: Biol. Sci.* 373, 20170268.
- O'Connor, R.C., Wetherall, K., Cleare, S., Eschle, S., Drummond, J., Ferguson, E., O'Connor, D.B., O'Carroll, R., 2018. Suicide attempts and non-suicidal self-harm: a national prevalence study of young adults. *Br. J. Psychiatry Open* 4, 142–148.
- Pearlman, D., Peplau, L.A., 1981. Toward a social psychology of loneliness. *Pers. Relatsh.* 3, 31–56.
- Office for National Statistics- Suicide in the UK: 2018 Registrations. 3rd Septmeber2019. URL: <https://www.ons.gov.uk/peoplepopulationandcommunity/birthsdeathsandmarriages/deaths/bulletins/suicidesintheunitedkingdom/2018registrations>.
- Pietrzak, R.H., Pitts, B.L., Harpaz-Rotem, I., Southwick, S.M., Whealin, J.M., 2017. Factors protecting against the development of suicidal ideation in military veterans. *World Psychiatry* 16, 326–327.
- Prince, M.J., Reischies, F., Beekman, A.T.F., Fuhrer, R., Jonker, C., Kivela, S.L., Lawlor, B.A., Lobo, A., Magnusson, H., Fichter, M., Van Oyen, H., Roelands, M., Skoog, I., Turrina, C., Copeland, J.R.M., 1999. Development of the EURO-D scale – a European Union initiative to compare symptoms of depression in 14 European centres. *Br. J. Psychiatry* 174, 330–338.
- Qualter, P., Vanhalst, J., Harris, R., Van Roekel, E., Lodder, G., Bangee, M., Maes, M., Verhagen, M., 2015. Loneliness Across the Life Span. *Perspect. Psychol. Sci.* 10, 250–264.
- Qualter, P.B., Stephen, L., Munn, Penny, Rotenberg, Ken J., 2010. Childhood loneliness as a predictor of adolescent depressive symptoms: an 8-year longitudinal study. *Eur. Child Adolesc. Psychiatry* 19, 493–501.
- Radloff, L.S., 1977. The CES-D Scale: A Self-Report Depression scale for research in the general population. *Appl. Psychol. Meas.* 1, 385–401.
- Russell, D., Peplau, L.A., Cutrona, C.E., 1980. The revised UCLA loneliness scale: concurrent and discriminant validity evidence. *J. Pers. Soc. Psychol.* 39, 472.
- Russell, D., Peplau, L.A., Ferguson, M.L., 1978. Developing a measure of loneliness. *J. Pers. Assess.* 42, 290–294.
- Russell, D.W., 1996. UCLA Loneliness scale (version 3): reliability, validity, and factor structure. *J. Pers. Assess.* 66, 20–40.
- Salzinger, S., Rosario, M., Feldman, R.S., Ng-Mak, D.S., 2007. Adolescent suicidal behavior: Associations with preadolescent physical abuse and selected risk and protective factors. *J. Am. Acad. Child Adolesc. Psychiatry* 46, 859–866.
- Schinka, K.C., van Dulmen, M.H.M., Mata, A.D., Bossarte, R., Swahn, M., 2013. Psychosocial predictors and outcomes of loneliness trajectories from childhood to early adolescence. *J. Adolesc.* 36, 1251–1260.
- Spitzer, R.L., Kroenke, K., Williams, J.B.W., Group, a.T.P.H.Q.P.C.S., 1999. Validation and utility of a self-report version of PRIME-MD the PHQ primary care study. *JAMA* 282, 1737–1744.
- Stein, J.Y., Itzhaky, L., Levi-Belz, Y., Solomon, Z., 2017. Traumatization, loneliness, and suicidal ideation among former prisoners of war: a longitudinally assessed sequential mediation model. *Front. Psychiatry* 8, 281–281.
- Stickley, A., Koyanagi, A., 2016. Loneliness, common mental disorders and suicidal behavior: findings from a general population survey. *J. Affect. Disord.* 197, 81–87.
- Stokes, J.P., Levin, L., 1986. Gender differences in predicting loneliness from social network characteristics. *J. Pers. Soc. Psychol.* 51, 1069.
- Stolz, E., Fux, B., Mayerl, H., Rásky, É., Freidl, W., 2016. Passive suicide ideation among older adults in Europe: a multilevel regression analysis of individual and societal determinants in 12 countries (SHARE). *J. Gerontol. Ser. B: Psychol. Sci. Soc. Sci.* 71, 947–958.
- Strand, B.H., Dalgard, O.S., Tambs, K., Rognerud, M., 2003. Measuring the mental health status of the Norwegian population: a comparison of the instruments SCL-25, SCL-10, SCL-5 and MHI-5 (SF-36). *Nord. J. Psychiatry* 57, 113–118.
- Stravynski, A., Boyer, R., 2001. Loneliness in relation to suicide ideation and parasuicide: a population-wide study. *Suicide Life Threat. Behav.* 31, 32–40.
- Teo, A.R., Marsh, H.E., Forsberg, C.W., Nicolaidis, C., Chen, J.L., Newsom, J., Saha, S., Dobscha, S.K., 2018. Loneliness is closely associated with depression outcomes and suicidal ideation among military veterans in primary care. *J. Affect. Disord.* 230, 42–49.
- Thastum, M., Ravn, K., Sommer, S., Trillingsgaard, A., 2009. Reliability, validity and normative data for the Danish Beck Youth Inventories. *Scand. J. Psychol.* 50, 47–54.
- The World Bank, 2019. *World bank staff estimates based on age/sex distributions of united nations population division's world population prospects: 2017 revision, in: Bank, T.W. (Ed.)*
- Trakhtenbrot, R., Gvion, Y., Levi-Belz, Y., Horesh, N., Fischel, T., Weiser, M., Treves, I., Apter, A., 2016. Predictive value of psychological characteristics and suicide history

- on medical lethality of suicide attempts: A follow-up study of hospitalized patients. *J. Affect. Disord.* 199, 73–80.
- Turecki, G., Brent, D.A., 2016. Suicide and suicidal behaviour. *Lancet North Am. Ed.* 387, 1227–1239.
- Van Orden, K.A., Witte, T.K., Cukrowicz, K.C., Braithwaite, S.R., Selby, E.A., Joiner Jr., T.E., 2010. The interpersonal theory of suicide. *Psychol. Rev.* 117, 575–600.
- Vanhalst, J., Luyckx, K., Teppers, E., Goossens, L., 2012. Disentangling the longitudinal relation between loneliness and depressive symptoms: prospective effects and the intervening role of coping. *J. Soc. Clin. Psychol.* 31, 810–834.
- Victor, C.R., Yang, K., 2012. The prevalence of loneliness among adults: a case study of the United Kingdom. *J. Psychol.* 146, 85–104.
- Wang, R., Xue, D., Liu, Y., Chen, H., Qiu, Y., 2018. The relationship between urbanization and depression in China: the mediating role of neighborhood social capital. *Int. J. Equit. Health* 17, 105.
- Wetherall, K., Cleare, S., Eschle, S., Ferguson, E., O'Connor, D.B., O'Carroll, R.E., O'Connor, R.C., 2018. From ideation to action: differentiating between those who think about suicide and those who attempt suicide in a national study of young adults. *J. Affect. Disord.* 241, 475–483.
- Wichstrøm, L., 2009. Predictors of non-suicidal self-injury versus attempted suicide: similar or different? *Arch. Suicide Res.* 13, 105–122.
- Wong, W.C.W., Cheung, C.S.K., Hart, G.J., 2008. Development of a quality assessment tool for systematic reviews of observational studies (QATSO) of HIV prevalence in men having sex with men and associated risk behaviours. *Emerg. Themes Epidemiol.* 5, 23.
- World Health Organization, 2017. World health statistics 2017: monitoring health for the SDGs. *Sustain. Dev. Goals*, Geneva 1–103.
- Yang, K., Victor, C., 2011. Age and loneliness in 25 European nations. *Ageing Soc.* 31, 1368–1388.